

Brisbane's Inner City Strategy

Our plan for a future
alive with opportunity



Dedicated to a better Brisbane



Acknowledgement of Country

Brisbane City Council acknowledges this Country and its Traditional Custodians. We acknowledge and respect the spiritual relationship between Traditional Custodians and this Country, which has inspired language, songs, dances, lore and dreaming stories over many thousands of years. We pay our respects to the Elders, those who have passed into the dreaming; those here today; those of tomorrow.

May we continue to peacefully walk together in gratitude, respect and kindness in caring for this Country and one another.

Caring for Country - Land, Water and Sky by Riki Salam (Mualgal, Kaurareg, Kuku, Yalanji), We are 27 Creative.



Planning for sustainable growth



Brisbane is where big ideas and opportunities come alive. Our city is famous for its subtropical lifestyle, exciting precincts and excellence in urban renewal. Following the release of *Brisbane's Sustainable Growth Strategy* and further community consultation, we continue our commitment to the ongoing revitalisation of the inner city to create a greener, more prosperous and people-first city that celebrates and protects our unique character. *Brisbane's Inner City Strategy* (the Strategy) captures our collective aspirations and goals, guiding us towards a sustainable future.

Council has a vision for Brisbane. We know the community wants us to manage growth in a sustainable way. I'm excited that the lifestyle we love so much will be maintained through ongoing investment in public transport, parks, community facilities and walkable neighbourhoods. Future housing supply will be focused in locations that are already highly connected with road and public transport infrastructure.

Our inner city is no stranger to change, with many of our most loved places emerging as a direct result of well managed urban renewal. Places like New Farm, Teneriffe and South Brisbane are alive with vibrancy and character. We will harness the learnings from our urban renewal successes and commit to creating welcoming precincts and wonderful places for people to live, work and socialise.

As we look towards the Brisbane 2032 Olympic and Paralympic Games and beyond, Council is committed to achieving sustainable long-term outcomes that will benefit Brisbane. The Games offer a truly unique opportunity to help deliver our residents a lasting legacy of better transport, greener streets and more sports and cultural facilities for our city.

Guided by the Strategy, we are committed to continuing to work with residents, businesses, governments and the community to deliver the best possible outcomes. Together, we can create a truly green, connected, inclusive and thriving inner city, alive with diverse housing options and opportunities for all.

Adrian Schinner
Lord Mayor

Document purpose

Brisbane's inner city is the driving force behind our rise as a global city. It serves as the centrepiece for the social, cultural and economic life of the city and the South East Queensland region. *Brisbane's Inner City Strategy* (the Strategy) provides the strategic vision to help guide our growing inner city and its transformation over coming decades, setting the stage for revitalised and thriving precincts and places, alive with opportunity.

The Strategy is divided into three parts.

- **Part 1** outlines the importance of Brisbane's inner city and highlights the opportunities for future renewal and enrichment.
- **Part 2** sets the strategic direction that will help shape the future of Brisbane's inner city, underpinned by four key pillars to support the inner city's vital functions and celebrate Brisbane's unique lifestyle, climate and culture.
- **Part 3** recognises the importance of Brisbane's growing inner city and the need to prioritise precinct planning to guide transformative change both now and into the future.

PART 1 Brisbane's evolving inner city 6

Brisbane 2032 Olympic and Paralympic Games 10

PART 2 Brisbane's inner city future direction 12

Four Strategy pillars 14

Celebrating Brisbane's subtropical lifestyle 16

Curating cultural experiences 20

Connecting places and transport 24

Creating inner city neighbourhoods 28

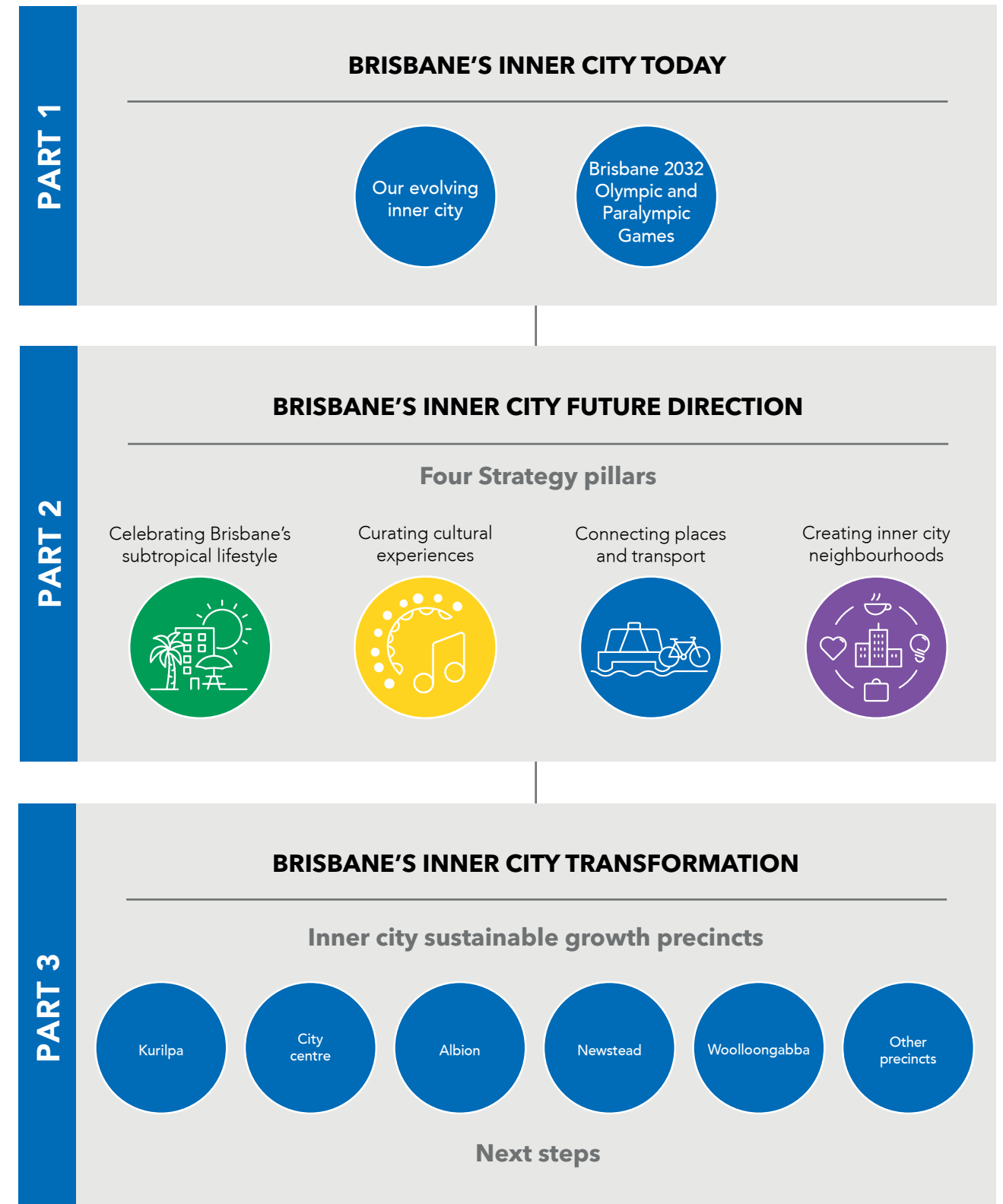
PART 3 Brisbane's inner city transformation 32

Inner city sustainable growth precincts 34

Priority sustainable growth precincts 36

Next steps 38

Document structure



Brisbane's evolving inner city

Brisbane's inner city is alive with opportunity. As the epicentre of our global city, it is where art meets industry, knowledge powers enterprise, ideas are transformed into innovation and local talent finds a global audience.

Sustainable growth

By 2041, Brisbane's inner city will be home to more than 470,000 residents.¹ The inner city plays a significant strategic function in meeting future growth needs for Brisbane and South East Queensland and this Strategy provides a blueprint for sustainable growth. Future development opportunities and housing will need to be optimised and located with access to transport, services and employment. This will require innovation and design excellence to deliver a diversity of housing in existing inner city precincts. New housing projects will deliver exemplary standards for sustainability and accessibility, featuring green buildings that enhance the city's visual appeal and offer health, wellbeing, economic and lifestyle benefits for residents.

Knowledge and lifestyle

The inner city is integral to Brisbane's global identity, prosperity and liveability. As Queensland's capital city core, it is the state's most significant employment hub. The number of inner city workers is expected to double over the next two decades, reaching more than 570,000 by 2041.² Brisbane is also an emerging force in the world's knowledge economy, with a growing proportion of jobs in professional, scientific, health, education and technology sectors. From global corporations to world-class universities, local start-ups and health and research institutions, Brisbane's knowledge corridor is an economic powerhouse that drives future growth and global competitiveness for the region.

A high-amenity inner city with thriving precincts and enviable lifestyle offerings will continue to attract talented workers and new businesses, ensuring that Brisbane remains competitive on the world stage. Brisbane's inner city showcases the relaxed, outdoor lifestyle that characterises the city and its residents. The inner city is home

to live entertainment, cultural destinations and experiences, riverfront walks, urban parks and spaces, vibrant retail and dining precincts. The lifestyle corridor is home to major cultural destinations, iconic sporting venues and many of the city's premier outdoor recreational spaces.

Connected precincts and communities

Key drivers for growth include increased accessibility and amenity delivered by major infrastructure projects. Billion-dollar investments in a world-class transport network, including Brisbane Metro, Cross River Rail and Council's Green Bridges Program, will make it easy and more convenient to move into and around Brisbane's inner city. These vital connections unlock new capacity for growth and set the scene for an era of significant transformation.

Dynamic urban precincts

During the past 25 years, Brisbane's inner city has seen significant urban renewal that has created some of the places and precincts most loved by our residents. The emergence of Brisbane's inner city as a global business and lifestyle hub is supported by a mosaic of dynamic urban precincts, distinguished by their local character and diverse mix of functions. Each of Brisbane's inner city precincts offer something unique, from centres of commerce and retail through to urban living, diverse sport, recreation and cultural facilities, and high-quality education and research institutions.

Brisbane's inner city precincts will also play a key role in getting our city ready to host the Brisbane 2032 Olympic and Paralympic Games, providing an opportunity to leverage future investments for the benefit of the community and to promote our city on the global stage.



^{1,2} Brisbane City Council 2023, using Queensland Government and National Institute of Economic and Industry Research (NIEIR) projection data.



Sustainable growth areas



Connected precincts and communities



Knowledge and lifestyle corridors



Dynamic urban precincts

-  Brisbane's lifestyle corridor and inner city growth areas are centred on the Brisbane River and include established and emerging lifestyle precincts.
-  Brisbane's knowledge corridor runs north to south and represents Queensland's largest collection of knowledge-intensive industries.
-  Key inner city precincts along these corridors have a unique opportunity to build on established strengths and infrastructure investment to enhance lifestyle, local amenity and destination qualities.
-  Strategic Framework city centre
-  Significant lifestyle destinations
-  Knowledge and technology hubs
-  Metro
-  Rail
-  Urban waterway corridors
-  Existing parks
-  Inner city bridges (existing and under construction)
-  Future inner city pedestrian bridges

Note: precinct boundaries and map features are indicative and will be refined through the precinct planning process.



Brisbane 2032 Olympic and Paralympic Games

Unlocking lasting benefits for Brisbane

In July 2032, the global spotlight will shine on Brisbane as athletes from more than 200 nations descend on the city for the Brisbane 2032 Olympic and Paralympic Games. Our inner city is at the heart of the action.

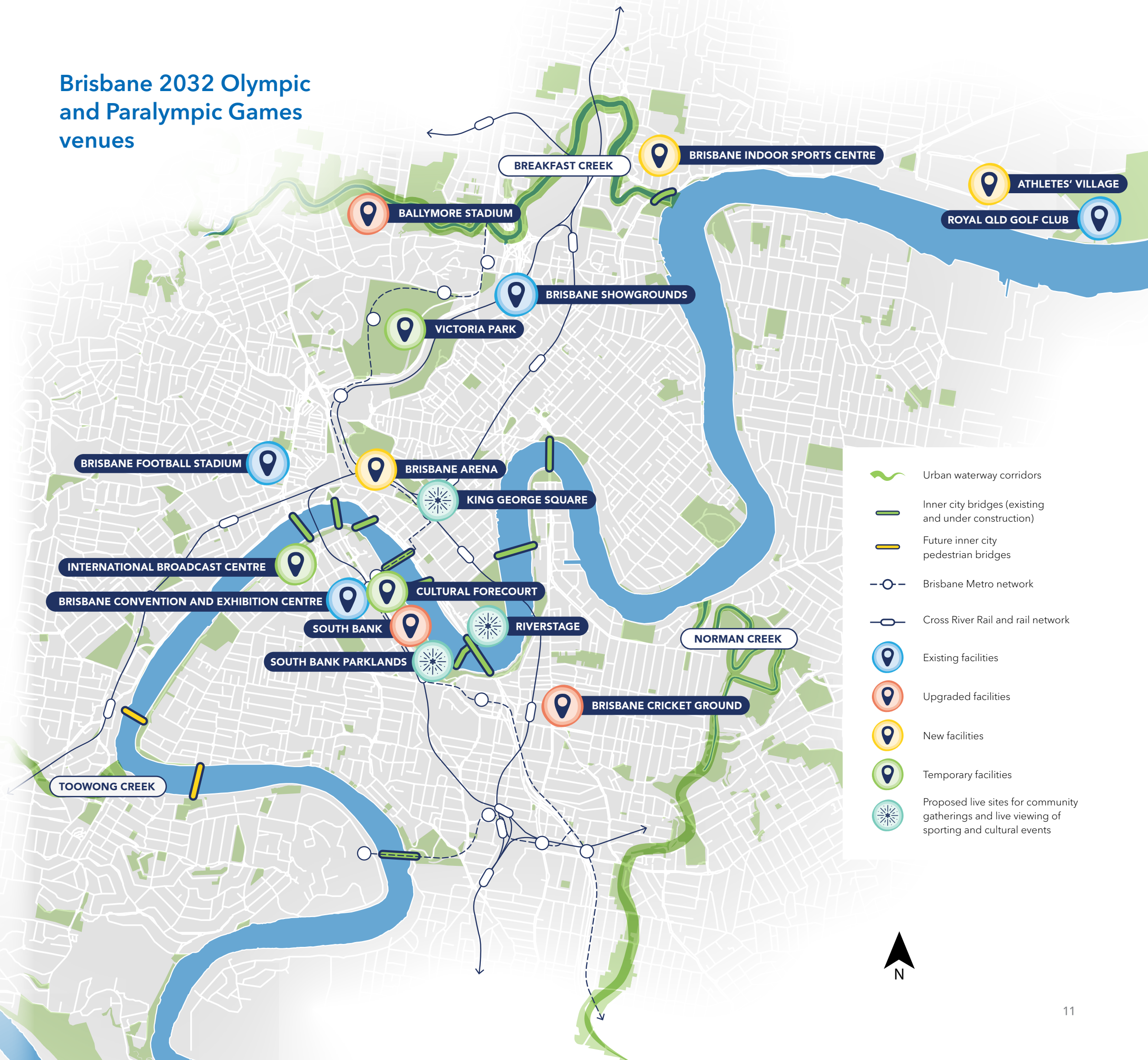
Australia's third Olympic and second Paralympic Games will build on the innovation and successes of Melbourne 1956 and Sydney 2000 to showcase our city and surrounding region to the world. As well as shining a light on our passionate sporting culture, the Games will be set against a backdrop of glittering cityscapes, lush urban parks, iconic riverside spaces and shaded urban streetscapes. The Brisbane 2032 Games is our chance to show the world who we are and leave a lasting impression.

Games venues, visitor destinations and live sites will be concentrated in the inner city. Before, during and after the Games, attention will turn to the city's inner core, presenting a unique opportunity to catalyse investment in local venues, infrastructure, places and communities.

As 84% of planned Games venues are existing or temporary structures, the focus will be on upgrading and optimising our infrastructure, as well as connecting our venue precincts, to make the Games affordable and sustainable. This approach aligns with the International Olympic Committee's 'New Norm' delivery model which encourages host cities to make the Games fit the city, to deliver a legacy that is aligned with strategic aspirations and community needs.

This Strategy presents a planning blueprint to integrate new and upgraded facilities into the inner city's urban fabric, ensuring Brisbane 2032 offers both an event to remember and a lasting legacy for the city.

Brisbane 2032 Olympic and Paralympic Games venues



Brisbane's inner city future direction

In 2022, Council carried out a citywide conversation and engagement campaign, called Inner Spark, with the aim of generating bright ideas to help shape the future of the inner city. We asked the community, designers, creatives and industry what their big ideas were for Brisbane's inner city.

You told us you wanted:

- greener streets, green buildings and to get closer to nature
- places that reflect and celebrate our rich cultural diversity and Aboriginal and Torres Strait Islander communities
- more events, festivals, culture and sport
- better ways to walk and cycle between key precincts
- to promote Brisbane as the destination for education, business, and tourism
- more public transport services to reduce our reliance on cars
- easier access to the river and other natural amenities.

Brisbane's Book of Big Ideas celebrates the breadth and depth of aspirational ideas received through the Inner Spark engagement program. We've listened to the diverse voices of the community and shaped the four pillars and future directions of the Strategy to help drive the evolution of Brisbane as a livable city and destination on the world stage.

Inner Spark engagement snapshot

6760

people engaged with at community pop-up events

1250

ideas from the community for the inner city

60+

Big Ideas from designers, creatives and industry

Inner Spark
1960+ ideas

17

workshops conducted with industry stakeholders and organisations

18

pop-up community engagement events held across Brisbane's inner city

29,789

votes received from the community on Big Ideas and community ideas for the inner city

Four Strategy pillars

As Brisbane's thriving inner city continues its journey of transformation and renewal, we need to place emphasis on our lifestyle, culture, connectivity and the co-location of housing, employment and lifestyle to create the foundations for the future.

Four Strategy pillars set the strategic direction for Council and provide guidance for the private sector and the community. Each pillar is supported by future directions that have been informed by the community and will help shape the future of Brisbane's inner city.

The principal mechanism to achieve the Strategy outcomes is precinct planning, using the direction provided by the four pillars to develop precinct plans across the inner city.



Celebrating Brisbane's subtropical lifestyle

Brisbane's subtropical lifestyle is the essence of our inner city character and identity. A celebration of our great climate and lush landscapes, clean environment and a strong connection to nature. Our meandering river and creeks, set within an undulating topography, creates visual interest and a variety of outdoor places to relax and enjoy. Well-designed and sustainable green buildings contribute to the character and liveability of our city.



Curating cultural experiences

For Aboriginal peoples, the inner city is where people traditionally came to gather, connect, share stories and celebrate. Today, it is still a place that comes alive and celebrates the rich diversity of cultures and people that make up our city. Whether art, performance, history, cultural events, festivals or gatherings, Brisbane's inner city is a place where everyone can discover something wonderful.



Connecting places and transport

Brisbane's inner city transport network of trains, ferries, buses, cycleways and green walkable bridges and streets, efficiently moves people to the places they want to go and need to be. The inner city prioritises connected places for people, making our precincts and destinations accessible to all. Our transport system will break down access barriers and create opportunities to live, work and visit more destinations across the inner city.



Creating inner city neighbourhoods

Brisbane's mosaic of growing inner city precincts are central to realising a more sustainable and dynamic future, accommodating growth in locations that are highly connected and rich in infrastructure. As thriving, mixed-use communities, inner city neighbourhoods will include diverse and distinctive housing, local employment and services, and places for innovation and creativity to flourish.



INNER BRISBANE PILLAR

Celebrating Brisbane's subtropical lifestyle

Highlighting the important role of open space, healthy environments and the public realm in enhancing our unique quality of life.

Vibrant green spaces and journeys

Subtropical spaces are hallmarks of our inner city. They provide the foundations for emerging green (land-based) and blue (water-based) networks, encompassing our distinctive parks, public open spaces, river and creeks. They are our places of celebration, participation, discovery and respite.

Our green and blue networks connect our precincts and major destinations, making it easier for all residents, workers and visitors to enjoy the inner city's unique places and lifestyle experiences. They also provide the perfect setting and backdrop for activation, including outdoor dining and the hosting of events.

The provision of new and improved public open space across the inner city, and the creation of iconic subtropical journeys, enhances liveability for residents and increases the inner city's appeal to visitors.

Resilient landscapes

Brisbane is Australia's most biodiverse capital city and the inner city is an important natural habitat and environmental system.

Working with natural systems and processes, returning vegetation to our river and creek banks and ensuring higher standards of building and

infrastructure planning and design, will allow the inner city to continue to function as an important natural habitat and better respond to natural hazards. A focus on our river and creeks will also allow us to progressively improve amenity and biodiversity along our waterways.

The inner city is part of an integrated ecosystem and our commitment to sustainable outcomes will result in an environment that is healthy and resilient to the challenges of the future.

Our competitive advantage

Brisbane's subtropical lifestyle sets us apart from other cities. Our commitment to lifestyle delivers positive benefits for community health and liveability and makes our city a natural place to thrive and innovate. It also creates a competitive advantage by underpinning Brisbane as an attractive place to invest and visit, delivering economic benefit and prosperity to the whole city.

Leveraging the interconnections between lifestyle, culture and the economy will support our long-term prosperity and economic resilience as a city.

A network of green and blue infrastructure connects and beautifies our inner city precincts, and creates cool and enjoyable journeys on foot, bike or public transport.

The Arbour, South Bank Parklands



Celebrating Brisbane's subtropical lifestyle

Desired outcome - the inner city will be known for its network of lush, shady corridors and subtropical public spaces and buildings that enhance overall comfort and experience for residents and visitors.

As the population of the inner city increases, our growing precincts will need access to a network of outdoor spaces to accommodate the lifestyle needs of residents, workers and visitors. These spaces will provide an accessible 'backyard' for inner city communities, building community cohesion and enhancing liveability.

Our outdoor spaces will include public realm and open space at all scales, from intimate pocket parks and parklets, to large recreation reserves like Victoria Park / Barrambin. Diverse in size and function, our outdoor spaces will provide opportunities for us to celebrate our city, our climate and our exceptional way of life. While space is limited within the inner city for new parkland, opportunities exist to re-purpose underutilised land for open space through development projects and by enhancing local creek and river corridors.

New river and creekside parkland will rewild our waterways and improve biodiversity outcomes, reinforcing the inner city as an exemplar of sustainable waterway management.

Subtropical links and iconic boulevards will create a web of green infrastructure, linking Brisbane 2032 Games venues and major inner city destinations, reinforcing the inner city as an oasis for pedestrians and cyclists. In 2032, these connections will showcase our subtropical identity to the world, reinforcing our standing as a celebrated lifestyle city.

Our landmark *New World City Design Guide - Buildings that Breathe* has prompted a shift towards best practice subtropical and environmental design. Under the subtropical lifestyle pillar, the opportunity exists to expand this vision and provide a more holistic understanding of future sustainability and resilience expectations for people, buildings and places in the inner city.

Future directions

- Deliver new open space in Kurilpa, Albion and Woolloongabba to support our growing inner city communities.
- Create a network of iconic boulevards, in partnership with the Queensland Government, to improve amenity, walkability and active transport links in the inner city and to connect our Brisbane 2032 Games venues.
- Deliver new public realm and green space in the inner city where people can relax, exercise, and enjoy our outdoor lifestyle.
- Facilitate more outdoor dining spaces to support local businesses and bring vibrancy to the city.
- Rewild and rehabilitate our inner city waterways, including the Brisbane River, Breakfast Creek, Norman Creek and Toowong Creek.
- Develop Brisbane's Design Rating Scheme to support best practice subtropical and environmental design for development outcomes, public realm improvements and infrastructure delivery.
- Plan for and support the delivery of new and enhanced inner city sports precincts to meet the needs of our growing and active inner city communities.

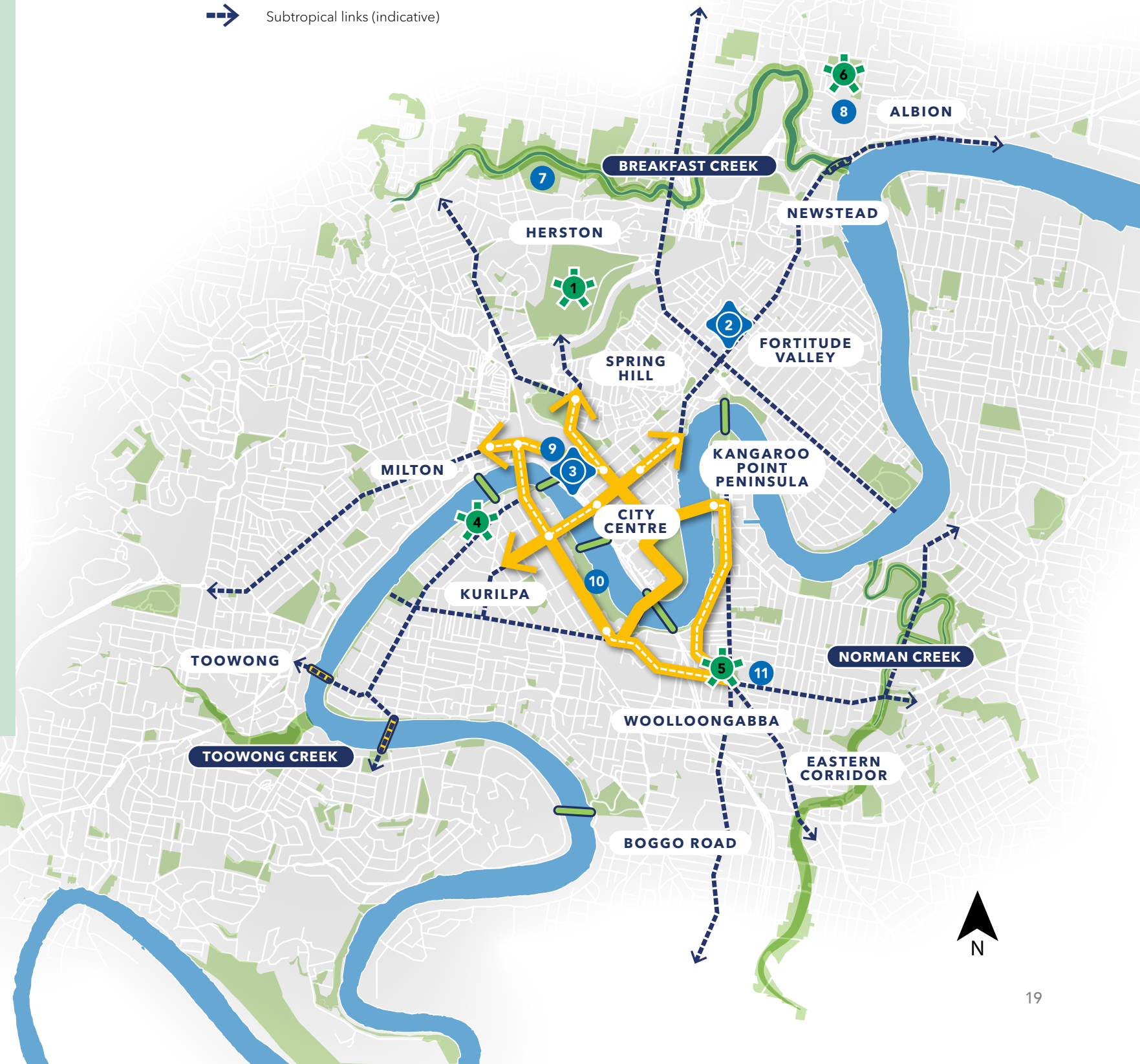
- Urban waterway corridors
- Inner city bridges (existing and under construction)
- Future inner city pedestrian bridges
- Existing parks
- New open space opportunities
- New public realm opportunities
- Iconic boulevard network (indicative)
- Future iconic boulevard upgrades (indicative)
- Subtropical links (indicative)

New open space and public realm opportunities

- 1 Victoria Park / Barrambin
- 2 Bridge Street
- 3 North Quay
- 4 New riverside parkland
- 5 Woolloongabba
- 6 Breakfast Creek Sports Precinct

Facilities to be built or upgraded as part of the Brisbane 2032 Olympic and Paralympic Games

- 7 Ballymore National Rugby Training Centre
- 8 Breakfast Creek Indoor Sports and Parasports Centre
- 9 Brisbane Arena
- 10 South Bank Parklands
- 11 Brisbane Cricket Ground





INNER BRISBANE PILLAR

Curating cultural experiences

Acknowledging the inner city's standing as the cultural centre of Queensland and the role that the arts and multiculturalism play in bringing Brisbane's inner city experiences to life.

A cultural renaissance

The inner city comes alive for cultural events, from the spectacle of Brisbane Festival to the celebration of music that is Valley Fiesta. The inner city contains Queensland's premier performing arts centre, museum, science centre and library and lists an impressive array of major events on its events calendar. Our inner city open spaces, streets, laneways and destinations are the beating cultural pulse of Queensland.

Transformation of the inner city into a lively urban centre has delivered a new cultural identity for the city. We are now recognised across the world for our cultural exports in music, art, literature, performance and innovation, with many of these exports incubated in our inner city entertainment precincts.

By enhancing our cultural attributes, and building our profile as an events city, the inner city will support the emergence of a sophisticated and multi-dimensional city image that can deliver significant economic and cultural benefits for Brisbane and the South East Queensland region.

Our cultural economy

Across the world, cities increasingly understand that their experiential qualities and cultural capital create economic value and support community wellbeing.

Our success as a capital city will rely on our support of the city's vibrant arts and creative economy, offering more cultural experiences and destinations across the inner city. By diversifying and expanding our cultural offerings, Brisbane will be able to attract greater levels of visitation and expand our visitor and creative economies.

Multicultural identity

Within the inner city, a variety of languages are spoken and a diversity of cultural practices are observed. More than 25% of the inner city's residents speak a language other than English and 36% were born overseas. Cultural diversity connects us to the world, broadens our perspectives and enriches our lives. Brisbane has deep cross-cultural networks and continues to nurture global connections, including through the Sister Cities program.

Brisbane's inner city is a cultural magnet for tourists, international students and new immigrants. In turn, the inner city is shaped by the collective contributions of people from all backgrounds and walks of life.

Fostering cultural diversity across the inner city enriches our lived experience and creates a welcoming environment for people of all ages and backgrounds.

A diversity of experiences across the inner city will increase visitor length of stay and overnight spend, helping the Brisbane region secure an extra \$6.5b visitor expenditure per annum by 2031.

BrisAsia Festival



Curating cultural experiences

Desired outcome - the inner city will be a setting for world-leading cultural events and activities, providing diverse destinations and experiences that offer something for everyone.

Brisbane's inner city offers a unique visitor experience that embraces our subtropical climate, world-class cultural facilities, distinctive local precincts and engaging program of public art, creative lighting and activations.

The inner city has potential to accommodate an increased number of tourism destinations and attractions with local and global appeal. This includes new experiences that take advantage of the Brisbane River and accessibility to Moreton Bay.

As the inner city evolves, precincts and destinations will work together to provide an inner city experience that is rich with cultural meaning and creative offerings. Existing entertainment precincts like Fortitude Valley and our inner city malls will strengthen their role as lifestyle destinations, providing a creative outlet for musicians and artists and hosting a thriving day-and-night economy.

As Brisbane's international profile continues to rise and the number of international students and visitors to the city increases, we will continue to invest, with our partners and stakeholders, in the inner city as a destination, strengthening our knowledge and lifestyle attributes and building the social capital that allows us to succeed as one of the world's most culturally diverse cities.

Brisbane's inner city will celebrate our multicultural society through the hosting of events and festivals and via initiatives to make inner Brisbane more accessible and accommodating to people who speak a language other than English.

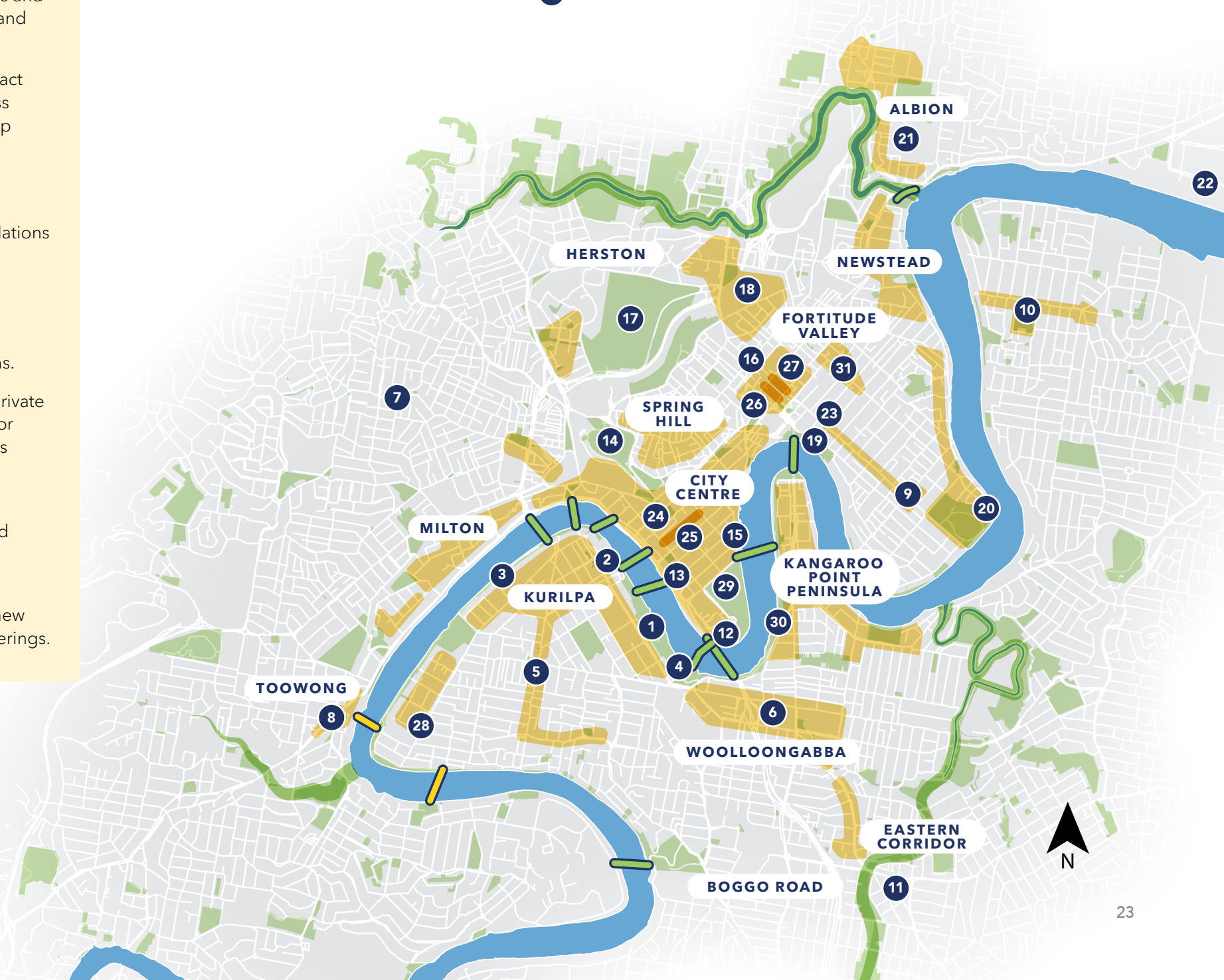
Future directions

- Address Council's Reconciliation Action Plan commitments through precinct planning activities.
- Partner with stakeholders to deliver a world class program of art, culture, festivals and events to drive visitation to our city and create more to see and do locally.
- Leverage our Host City status to attract major sporting, cultural and business events to our inner city in the lead up to the Brisbane 2032 Olympic and Paralympic Games.
- Progress, as part of the *South East Queensland City Deal*, a new First Nations cultural facility within the inner city.
- Grow the 24-hour economy by enabling a greater mix of activities in key inner city precincts to create diverse, vibrant and safe destinations.
- Collaborate with government and private sector partners to deliver more visitor experiences and promote Brisbane's inner city as a destination of choice.
- Work with government and the private sector to improve river based infrastructure and unlock new river tourism and recreational activities.
- Enhance digital assets to promote new experiences, events and cultural offerings.

- Urban waterway corridors
- Inner city bridges (existing and under construction)
- Future inner city pedestrian bridges
- Inner city cultural and experience hubs
- Inner city malls

Inner city destinations

- | | | |
|---|--|------------------------------------|
| 1 South Bank Parklands | 11 Stones Corner | 21 Breakfast Creek Sports Precinct |
| 2 Queensland Cultural Centre and Performing Arts Centre | 12 Riverstage | 22 Northshore Hamilton |
| 3 South Brisbane Riverside Lands Park | 13 Queens Wharf | 23 Judith Wright Arts Centre |
| 4 Brisbane Maritime Museum | 14 Roma Street Parklands | 24 Museum of Brisbane |
| 5 West End | 15 Waterfront Brisbane | 25 Queen Street Mall |
| 6 Woolloongabba | 16 Valley Entertainment Precinct | 26 Chinatown Mall |
| 7 Paddington | 17 Victoria Park / Barrambin | 27 Brunswick Street Mall |
| 8 Toowong Village | 18 Brisbane Showgrounds and Old Museum | 28 Thomas Dixon Centre |
| 9 New Farm | 19 Howard Smith Wharves | 29 City Botanic Gardens |
| 10 Bulimba | 20 Brisbane Powerhouse | 30 Kangaroo Point Cliffs |
| | | 31 James Street |





INNER BRISBANE PILLAR

Connecting places and transport

Recognising the critical importance of transport networks as movement corridors that connect people to each other and to thriving people-first precincts.

Places for people

Transport systems are enablers of city life. They connect key destinations and provide a structural framework from which to grow and expand the functions of the city. Brisbane's inner city will be known as a place that is comfortable and convenient for people to experience – whether on public transport, on two wheels or by foot.

Enhanced public and active transport networks that promote legible interchanges and walkable hearts, across the inner city, will catalyse opportunities for renewed economic and social life.

Supporting a broader transport function

While our priorities for the inner city's transport system are changing to reduce reliance on private vehicles and focus on active and public transport, the transport network will continue to perform a city and region-wide mobility function. This includes the movement of people into the inner city from suburban locations.

The transformation of Brisbane's transport infrastructure will reinforce the broader role that the network plays in connecting Brisbane's inner city to regional, interstate, and international transport corridors.

A safe and comfortable experience

With space at a premium, our road corridors will be used more efficiently, including measures that enhance the safety, comfort and experience of the public realm along key streets.

Green pedestrian bridges and other active and public transport infrastructure will link precincts and make it more enjoyable to move between and within Brisbane's inner city precincts.

Transit-oriented communities

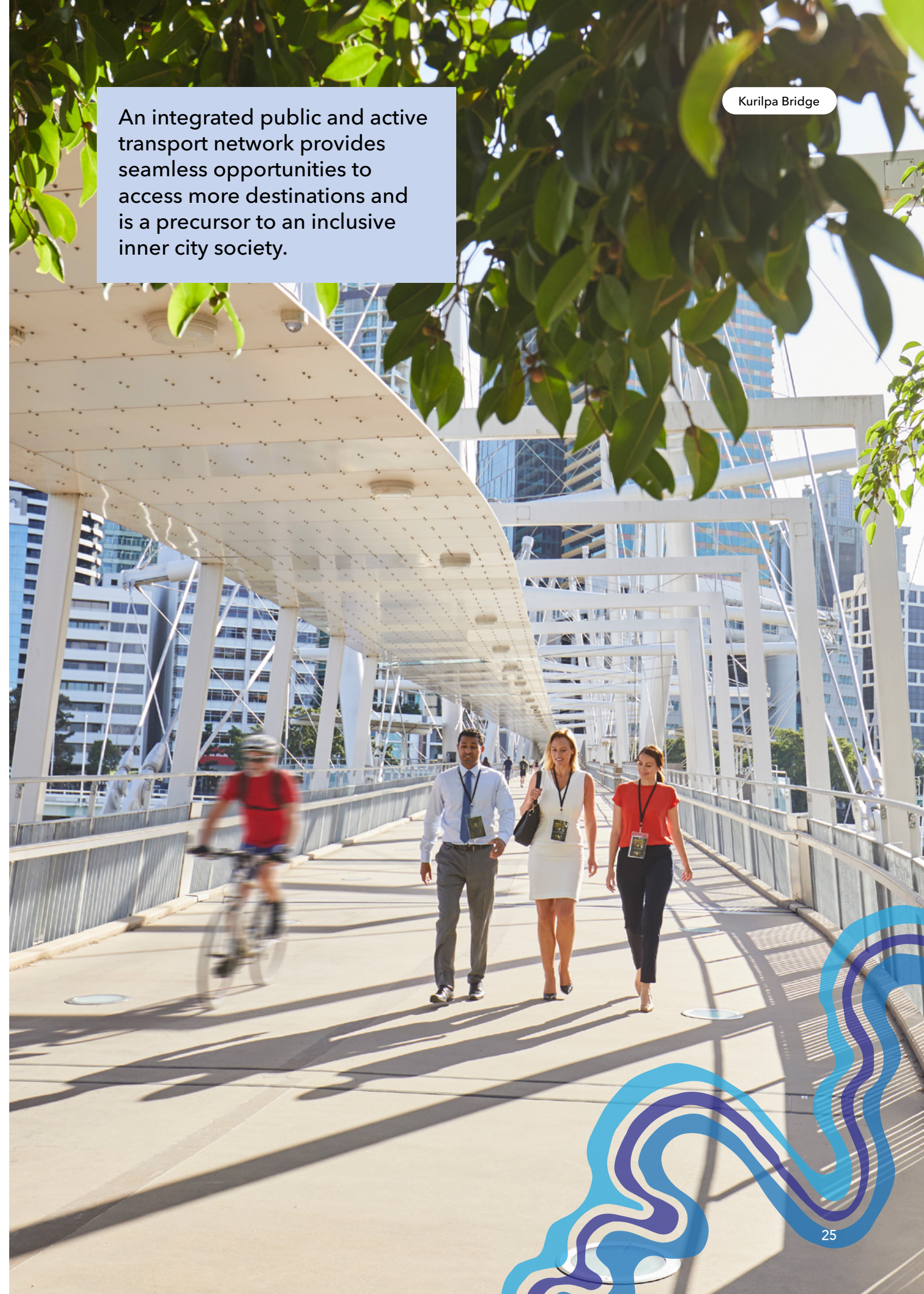
Achieving connected places across the inner city will rely on a new approach to car parking aligned with other initiatives to reduce high levels of car dependence.

Through precinct planning for the inner city, Council will explore approaches to better manage car parking and support the creation of transit-oriented communities. Investigations will include reducing car parking rates for development near public transport nodes, while providing good public transport choice as an alternative.

Prioritising active and public transport use across the inner city will help to improve public transport patronage levels, development feasibility and the quality of our public spaces.

An integrated public and active transport network provides seamless opportunities to access more destinations and is a precursor to an inclusive inner city society.

Kurilpa Bridge



Connecting places and transport

Desired outcome - the inner city will prioritise sustainable transport connections, centred on walkable precincts and integrated public and active transport networks.

As the inner city continues to transform, the ability for workers, residents and visitors to move quickly, easily and comfortably within and between inner city precincts will be essential to the success of Brisbane's economy and lifestyle.

The emergence of interchange hubs across the inner city will leverage the benefits of the Brisbane Metro and Cross River Rail projects to make the inner city more accessible for commuters, including people who are mobility challenged. Our interchange hubs will also support further expansions to the public transport network, including the proposed Gold CityGlider rapid bus service between Northshore Hamilton and Woolloongabba, and will link to active transport networks to create seamless journeys.

Our inner city precincts will feature walkable hearts - a local interpretation of Barcelona's 'superblocks' - supporting inner city neighbourhoods where car-free living is possible. Supported by investments in connecting active transport infrastructure, including extended walk time at crossings, mid-block crossing points and improved amenity through shade, seating and signage, the walkable hearts will deliver economic, social and environment benefits for the city.

Council's network of CityCats and ferries will continue to form the backbone of the inner city's river access network. Supported by investments in new infrastructure, including additional River Access Hubs and a connected Riverwalk and green bridges, the river will continue to emerge as a critical element of Brisbane's transport system.

The next step in the evolution of our river city is to expand recreational and tourism opportunities on the river and our creeks.

Future directions

- Create walkable and connected precincts across the inner city with direct pedestrian links, mid-block crossings, and improved amenity, safety and wayfinding.
- Continue to deliver a network of green bridges and improve active travel links to major public transport infrastructure to better connect our inner city.
- Reduce car parking rates within inner city precincts that are rich in public and active transport infrastructure.
- Improve universal access outcomes to create an accessible and inclusive inner city with a focus on priority precincts and around Brisbane 2032 Games venues.
- Integrate the CityGlider rapid transit service into precinct plans.
- Support the emergence of interchange hubs at strategic locations to enhance multi-modal interchange and connect with broader public and active transport networks.

- Urban waterway corridors
- Inner city bridges (existing and under construction)
- Future inner city pedestrian bridges
- Walkable hearts
- Public transport interchange hubs
- Proposed Gold CityGlider rapid bus service
- Brisbane Metro network
- Cross River Rail and rail network
- River and recreation hubs
- Public river access locations

Brisbane 2032 Olympic and Paralympic Games venues

- | | |
|--|--|
| 1 Breakfast Creek Indoor Sports and Parasports Centre | 7 Brisbane Arena |
| 2 Royal Queensland Golf Club | 8 Brisbane Convention and Exhibition Centre |
| 3 Ballymore National Rugby Training Centre | 9 Cultural Forecourt |
| 4 Brisbane Showgrounds | 10 South Bank |
| 5 Victoria Park | 11 Brisbane Cricket Ground |
| 6 Brisbane Football Stadium | |





INNER BRISBANE PILLAR

Creating inner city neighbourhoods

Creating inner city neighbourhoods responds to the inner city's mosaic of neighbourhood precincts, spanning traditional tin and timber character areas to high-growth precincts rich in existing and planned infrastructure.

Diverse housing

With a wealth of existing and planned infrastructure, including Brisbane Metro and green bridges, the inner city is the right location for growth. For the inner city to reach its full potential, we need to ensure that our growing precincts include a diverse mix of housing types and tenures, with improved design excellence standards and clear community benefit outcomes. Well-designed buildings that exhibit lush landscaping and open, permeable designs will be hallmarks of our inner city neighbourhoods and will provide housing that meets our evolving requirements and lifestyle expectations.

Enterprising spirit

Brisbane's inner city is a major employment generator. Over the coming decades, inner city jobs will continue to represent a significant share of Brisbane's total employment, providing employment opportunities for people from across the South East Queensland region.

More than 40% of Brisbane's workforce is contained within the inner city and by 2041, over 570,000 people will work within our inner five kilometres. There will continue to be a shift in employment to high value knowledge-intense sectors and the knowledge economy, centred on Brisbane's well defined knowledge corridor and the emergence of Urban Enterprise Areas across the inner city.

This employment, where supported by diverse housing options, will attract talented workers from across the globe and will create a foundation from which local businesses can take root and flourish.

Thriving businesses

Brisbane's lived experience of pandemic-enforced restrictions, and the rise of hybrid work arrangements, has reinforced the critical role that our inner city businesses play in enriching our lives and connecting us to local goods and services.

Ensuring that local businesses continue to thrive under changing economic conditions will breathe life into our inner city neighbourhoods and celebrate local specialisations and business diversity.

Inner city neighbourhoods will support local businesses to establish and thrive, expanding our economic and employment base while offering important community services and points of social contact and connection.

Transformation of the inner city into a tapestry of neighbourhoods will be a progressive process and our planning system must be flexible to meet the needs of the economy and community at each phase of this process.

Inner city urban renewal will support the creation of inner city neighbourhoods where high-quality housing and employment opportunities are unlocked.

Milton Urban Common



Creating inner city neighbourhoods

Desired outcome - the inner city will make the most of existing and planned infrastructure to create mixed-use neighbourhoods that unlock growth opportunities for residents and businesses.

Learning from our previous urban renewal success stories, the inner city will continue to evolve to provide homes for new residents, employment for workers and growth opportunities for existing and new businesses.

Unlocking housing supply across the inner city will cater to different life stages and housing needs and preferences to provide both short and long term housing for current and future residents, including students. New models of inner city living, including build-to-rent and assisted living, will be explored to reinforce the inner city as a place for people of all abilities, income levels and household types.

In some parts of the inner city, including existing centres like Fortitude Valley, Woolloongabba and Milton, unlocking housing supply will involve the facilitation of greater residential development that complements these existing centres. In other areas, including the Kurilpa precinct, renewal of former industrial land and allowing increased residential building heights will pave the way for contemporary living that champions our subtropical lifestyle and modern urban identity.

Renewal of the inner city's Urban Enterprise Areas into integrated neighbourhoods to work, live and collaborate, will maintain a productive economic base within the inner city and a spirit of enterprise that will safeguard our competitiveness in the knowledge economy. Linkages between the Urban Enterprise Areas and our inner city knowledge corridor will be harnessed to promote collaboration and the commercialisation of knowledge into products and services.

Our inner city businesses, including the small-to-medium businesses that anchor our communities and give the inner city its dynamic character, will continue to be supported. Unlocking new opportunities for inner city businesses will add greater levels of diversity and choice to the inner city and support employment.

Future directions

- Unlock housing supply through the renewal of key inner city precincts by facilitating increased building heights alongside the delivery of design excellence and community benefit.
- Renew the inner city's Urban Enterprise Areas as dynamic and liveable neighbourhoods with a mix of housing, shopping, entertainment, and productive workspaces.
- Work with government and private sector stakeholders to market the unique specialisations of the inner city's knowledge corridor precincts and Urban Enterprise Areas to attract new business, investment and talent to Brisbane.
- Continue to partner with the private sector to transform our inner city laneways and underused spaces into engaging places that make a positive contribution to the community.
- Partner with private and public sector providers to explore innovative housing supply and management models, including build-to-rent and student accommodation.
- Review universal housing and accommodation design standards and incentives to increase supply across the inner city.

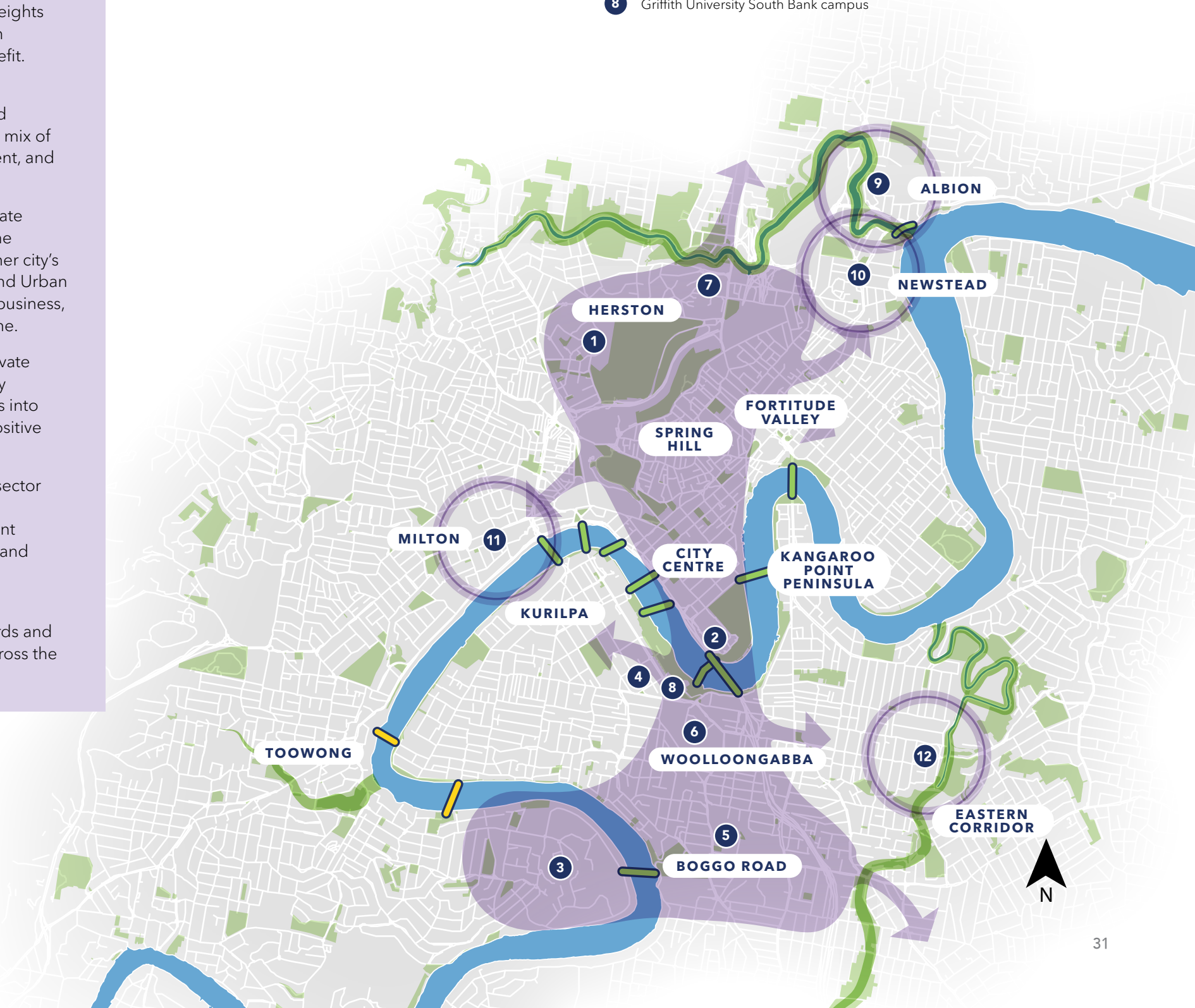
- Urban waterway corridors
- Inner city bridges (existing and under construction)
- Future inner city pedestrian bridges
- Knowledge corridor
- Urban Enterprise Areas

Major educational / institutional destinations

- 1 Queensland University of Technology Kelvin Grove campus
- 2 Queensland University of Technology Gardens Point campus
- 3 University of Queensland St Lucia campus
- 4 South Bank TAFE
- 5 PA Hospital and Ecosciences Precinct
- 6 Mater Hospital
- 7 Royal Brisbane and Women's Hospital
- 8 Griffith University South Bank campus

Urban Enterprise Areas

- 9 Albion
- 10 Newstead
- 11 Milton
- 12 Woolloongabba / East Brisbane



Brisbane's inner city transformation

Brisbane's growing inner city precincts are the key to a more sustainable and dynamic future as centres of culture, productivity and innovation that embody the quintessential Queensland lifestyle.

Focusing on the precinct scale allows for innovative initiatives that leverage land use, economics, placemaking and infrastructure to resolve critical challenges, unlock housing supply and leverage the intrinsic value of Brisbane's inner city.

Through a precinct renewal program for Brisbane's inner city, Council, and its partners, will identify housing opportunities, transformative projects and precinct-specific community benefits that will be incrementally unlocked to support new development.



Inner city sustainable growth precincts

Precinct planning is our pathway to success

Precinct planning underpins delivery of the Strategy's initiatives and directions and provides the means to enact strategic change at the local level.

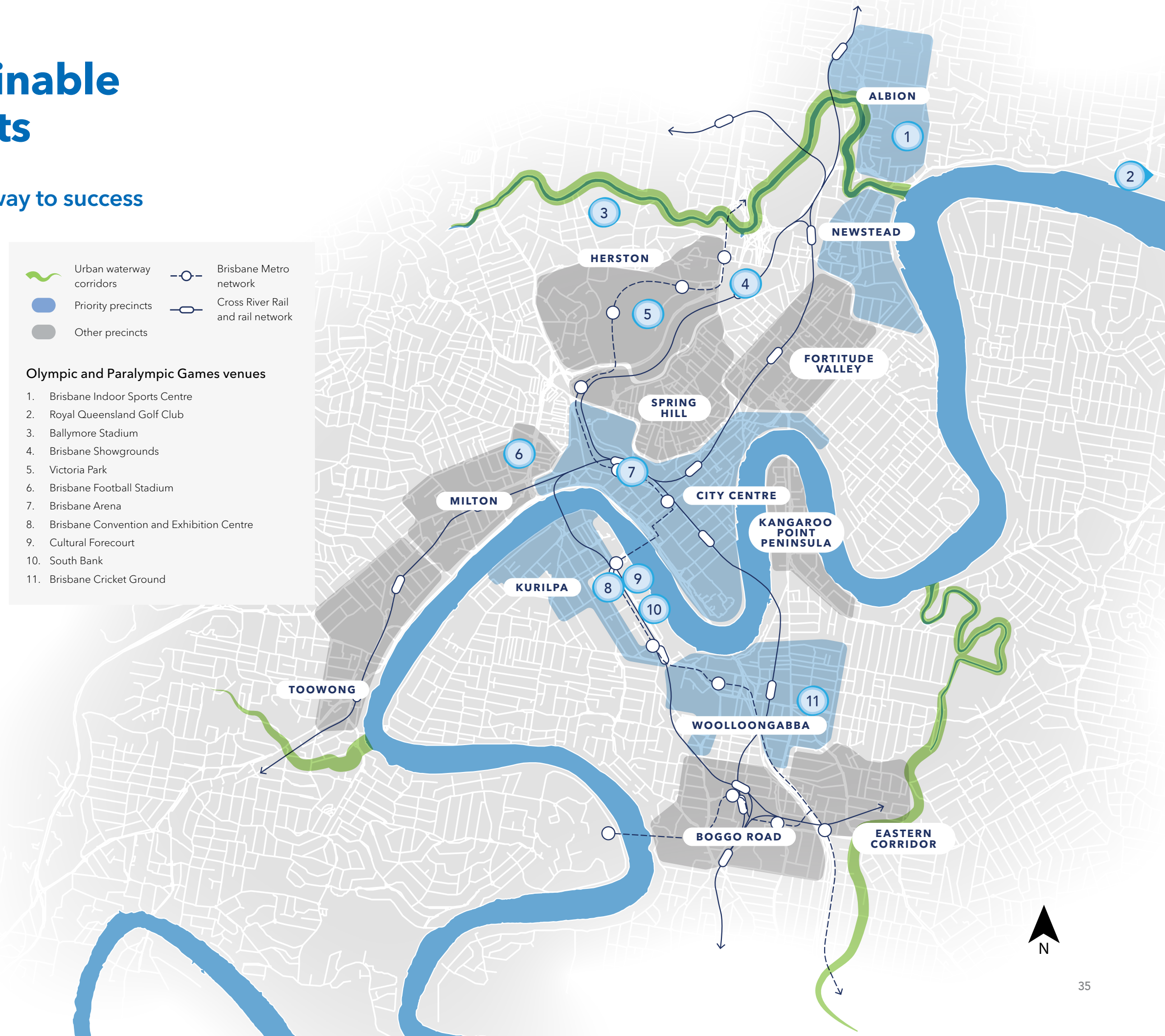
In the lead up to the Brisbane 2032 Olympic and Paralympic Games and beyond, Council will progressively undertake precinct planning for sustainable growth precincts throughout Brisbane's inner city, unlocking opportunities for increased housing and employment and delivering tangible outcomes in local neighbourhoods.

As shown on the adjoining map, the initial focus will be on precincts which feature major venues for the Brisbane 2032 Games and precincts that are rich in infrastructure and well located to accommodate sustainable growth. Early planning for these precincts will allow Council, the Queensland Government and other partners, including the Australian Government and private sector, to identify future priorities and develop a clear plan of implementation for the decade ahead.

Precinct plan investigations and other policy responses will continue to be developed for other key inner city precincts, working with local communities and key stakeholders to help realise their aspirations and unlock opportunities for Brisbane's continued transformation.

Olympic and Paralympic Games venues

1. Brisbane Indoor Sports Centre
2. Royal Queensland Golf Club
3. Ballymore Stadium
4. Brisbane Showgrounds
5. Victoria Park
6. Brisbane Football Stadium
7. Brisbane Arena
8. Brisbane Convention and Exhibition Centre
9. Cultural Forecourt
10. South Bank
11. Brisbane Cricket Ground



Note: precinct boundaries and map features are indicative and will be refined through the precinct planning process.

Priority sustainable growth precincts

Precinct planning will ensure that strategic directions are set in a timely manner to facilitate sustainable growth and leverage opportunities, particularly in the lead-up to the 2032 Olympic and Paralympic Games.

Council's forward program of precinct planning will focus, in the short term, on the precinct locations identified below.



Kurilpa

Kurilpa is a lively, welcoming and connected riverfront destination, characterised by world-class parklands and iconic cultural facilities on the doorstep of the city centre peninsula.

A precinct plan for Kurilpa will explore the provision of residential and employment opportunities, creation of public open space, improvements to the public realm and new lifestyle and visitor experiences.



City Centre

As the dynamic heart of Brisbane, the city centre plays a pivotal role as a neighbourhood, a cultural destination and an economic hub that drives success for the whole city and region.

A new *City Centre Master Plan* will accelerate the process of change that is currently underway in the city centre and will help shape the precinct's next exciting chapter.



Albion

As a premier destination for elite and community sport and with a thriving business culture, Albion is emerging as an important lifestyle, sport and commercial precinct in Brisbane's inner-north.

A precinct plan for Albion will respond to known challenges, including flooding, and leverage opportunities to create a world-class precinct on the edge of the inner city.



Newstead

Newstead is an established renewal precinct in Brisbane's inner-north that caters to a diverse and complementary mix of uses that support the economy and the needs of the community.

A precinct plan for Newstead will build on the precinct's strong lifestyle offering and committed transport investments to explore new opportunities to renew industrial land to provide opportunities to live, work and play.



Woolloongabba

Woolloongabba is an emerging events and lifestyle precinct with a locally loved and globally recognised identity, centred on the Gabba Stadium.

Council will work with the Queensland Government, through the Priority Development Area process, to deliver on future opportunities for Woolloongabba, including the provision of housing and new and improved streets and public open spaces.

Next steps

Brisbane's Inner City Strategy establishes the strategic directions that will shape the future of Brisbane's inner city sustainable growth precincts and guide Council's forward program of precinct planning.

Precinct planning for Brisbane's inner city will be a progressive process.

Brisbane's inner city is a dynamic and complex landscape with multiple stakeholders and an interplay of public and private interests. A partnership approach has defined our previous successes in renewing Brisbane's inner city and will continue to define our precinct planning model into the future.

Council is committed to working in partnership with other government agencies, the private sector and the community to lead the way in a comprehensive program of precinct planning and renewal, accommodating the needs of current and future generations, including the supply of well-designed, subtropical housing.

Together, we can realise a future alive with opportunity for Brisbane's inner city.

Priority precinct investigations program

2023-2025

*Kurilpa
Precinct Plan*

*Albion
Precinct Plan*

*City Centre
Master Plan*

*Newstead
Precinct Plan*

Key implementation actions

- Investigate future planning for the Kurilpa precinct.
- Investigate amendments to *Brisbane City Plan 2014* to embed inner city precinct planning.
- Assist the Queensland Government with precinct planning for Woolloongabba through the Priority Development Area process.

80 Ann Street, Brisbane City





Dedicated to a better Brisbane



Man&Wah, Botanical Cube, 2018. Installation shot Botanica: Contemporary Art Outside, 2018. Photograph Dave Kan.

Brisbane City Council
GPO Box 1434
Brisbane Qld 4001

Every effort is made to ensure that
information is correct at time of printing






Printed on sustainable paper



CA23-50633-04-6240
©2023 Brisbane City Council

 brisbane.qld.gov.au
 3403 8888

 /BrisbaneCityCouncil
 @brisbanecityqld
 @brisbanecitycouncil