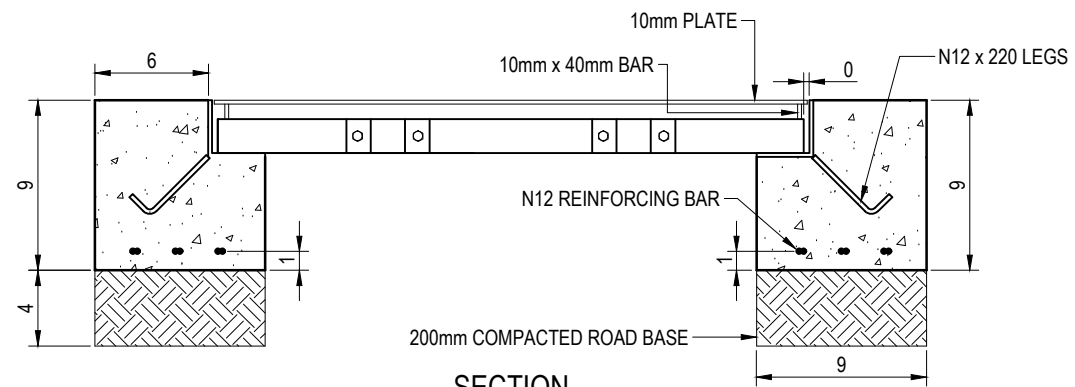


PLAN

TREE GRATE FRAME FOUNDATION DETAIL - PLAN

SCALE 1:20



SECTION

FIXING INSET - SECTION C-C

SCALE: 1:20

DESIGN NOTE

THE WORKING LOAD LIMIT OF THE TREE GRATE IS FOR PNEUMATIC TYRED VEHICULAR TRAFFIC UP TO 20 TONNES GROSS. THIS DRAWING WAS DEVELOPED WITH THE AGREEMENT OF URBAN FOUNTAINS AND FURNITURE. THE GRATE, FRAME AND FOOTINGS DETAILS ARE DEVELOPED FROM URBAN FOUNTAINS AND FURNITURE DRAWING NOS. HDF.01, HDF.02, HDF.03. THIS LOAD LIMIT INCLUDES THE TREE GRATE, SUPPORT FRAME AND FOOTINGS ONLY.



BRISBANE CITY COUNCIL STANDARD DRAWING

TREE GRATE - 20 TONNE LOAD LIMIT
INSTALLATION DETAILS
SHEET 2 OF 2

PUBLISH DATE	
SCALE AS SHOWN	
DRAWING NUMBER BSD-9073	
ORIGINAL SIZE A3	REVISION A