

Reminisce in **ROSALIE**



Proudly brought to you by

Dedicated to a better Brisbane

CONTENTS

- Map
- Introduction
- 1. Rosalie and floods
- 2. Rosalie School of Arts and Commemoration Hall (*18 Nash St*)
- 2a. Bungalow and Beverley Picture Theatres
- 3. Tram Shelter No. 6 (*Cnr Nash St & Elizabeth St*)
- 3a. Omnibuses
- 4. Little Citizens' Free Kindergarten (*57 Elizabeth St*)
- 5. Marist Brothers' Monastery (*56 Fernberg Rd*)
- 6. Church of the Sacred Heart (*369 Given Tce*)
- 7. Our Lady Help of Christians' Convent (*327 Given Tce*)
- 8. 'Lucerne' (*23 Fernberg Rd*)
- 8a. Fernberg Road planting boxes
- 9. Congregational Church (*2 Haig Rd*)
- 10. Gregory Park (*128 Barooka Rd*)
- 10a. Red Jacket Swamp
- 11. Milton Tennis Centre (*between Haig Rd and 315 Milton Rd*)
- 12. Milton State School (*36 Bayswater St*)
- 13. Milton Volunteer Fire Brigade and Albert Hall (*Cnr Bayswater St & Barooka Rd*)
- 14. Workers' cottages (*12-22 Agars St*)
- 15. 'Glentworth' (*34 Howard St*)
- 16. 'Boondah' (*50 Howard St*)
- 17. 'Barooka' (*90 Howard St*)
- 18. 'Fernberg' – Government House (*170 Fernberg Rd*)
- 19. 'Bishopsbourne' (*233 Milton Rd*)

MAP LEGEND

- 1 Rosalie and floods
- 2 Rosalie School of Arts and Commemoration Hall
- 3 Tram Shelter No. 6
- 4 Little Citizens' Free Kindergarten
- 5 Marist Brothers' Monastery
- 6 Church of the Sacred Heart
- 7 Our Lady Help of Christians' Convent
- 8 'Lucerne'
- 9 Congregational Church
- 10 Gregory Park
- 11 Milton Tennis Centre
- 12 Milton State School
- 13 Milton Volunteer Fire Brigade and Albert Hall
- 14 Workers' cottages
- 15 'Glentworth'
- 16 'Boondah'
- 17 'Baroona'
- 18 'Fernberg' – Government House
- 19 'Bishopsbourne'

1 Heritage site with plaque

1 Additional heritage sites of interest

— Walking trail

- - Optional extension to walking trail

Public toilet

Access for people with limited mobility

>>> Gradient between 1:20 – 1:14

>>> Gradient in excess of 1:14



INTRODUCTION



Before 1975 when Rosalie was redesignated as a locality within the suburb of Paddington, it had been a suburb in its own right. Rosalie was thought to have been named after the pastoral station 'Rosalie Plains', owned by early Milton resident and pastoralist, John McDougall.

The European presence was strongly felt by the local Indigenous people. They had lived in the area for thousands of years and became increasingly displaced as more land was cleared for the expanding settlement of Brisbane.

In the 1860s Rosalie's earliest European land owners built a series of large homes on estates situated on nearby hills. These grand residences included 'Lucerne', 'Fernberg' (now Government House), 'Baroona' and 'Bishopsbourne'.

A few small timber farm houses were built on the lower-lying land. A large wetland, known as 'Red Jacket Swamp', occupied the low-lying area that is now Gregory Park. By the 1880s, the majority of Rosalie's large estates were subdivided in response to Brisbane's growing population. These subdivided estates were renamed 'Rosalie Estate', 'Bayswater Estate', 'Baroona', 'Fernberg' and 'Oxford Estate'. As the small parcels of land were sold, the grand houses were quickly surrounded by smaller ones occupied by working class families. In 1875 the railway was extended through Milton and provided access to public transport for Rosalie's residents.

By the 1890s, Nash Street had become Rosalie's commercial centre. In 1895 there was a blacksmith, two fruiterers, two boot-makers, a newsagent, a hairdresser and a draper in the main street. Two horse-drawn omnibus companies, Mr Chalk's and Mrs Morton's, provided Rosalie residents with buses to and from the city. In 1904 an electric tramline was extended down Baroona Road.



View Across Milton Heights from Rosalie, ca. 1914,
State Library of Queensland, Negative Number 64045



Map for Auction of the Baroona Estate 28 November 1885, State Library of Queensland, Negative Number 196464

Rosalie's first school opened in 1889 and is known today as Milton State School. By the turn of the century, several churches had been established including the Catholic Church of the Sacred Heart, Rosalie Baptist Church, St Martin's Anglican Church and a Congregational Church.

Today Rosalie is one of Brisbane's most sought after residential areas. It is defined by its character housing and popular restaurant and entertainment precinct.

Please note that some sections of the 2.1 kilometre trail are steep and may not be accessible for people with limited mobility. The sites along Given Terrace, Fernberg Road and Howard Street can be accessed by car with on-street parking available.

ROSALIE

and floods

During the 2011 January flood event Rosalie was one of the hardest hit areas with severe floodwaters inundating shops, restaurants and hundreds of residences. At the height of the flood Nash Street resembled a muddy bay. While the devastating event heavily impacted the local community, the best of human nature shone through when people from the area and beyond turned up with gloves, buckets and brooms to help with the clean up.

As a geographically low-lying area, Rosalie has always been susceptible to flooding. In February 1893 Brisbane suffered its worst recorded flood event. Torrential rain from three successive cyclones hit the central Queensland coast and caused the banks of the Brisbane River to burst three times. The first and third flood events caused the most damage.

On 4 February 1893 the first of the three flood events heavily impacted the residents of Rosalie, washing away many homes and possessions. Then on 13 and 19 February residents were forced to endure more devastation as further flooding swept through the area. 'Red Jacket Swamp' was one of the first places in Brisbane to fill with floodwaters that quickly flowed over Baroona Road and into Nash Street.



Dinghy travelling down Baroona Rd, Rosalie, 2011 Floods,
Courtesy of the Aitchison Comino family, Rainworth



1893 floods taken from the Rosalie Torwood area looking
towards old Bishopsbourne, State Library of Queensland,
Negative Number 6288-0001-0001

"The water stretched in one sheet, unbroken save by an occasional tree or housetop, from the foot of the hills around Bayswater, Rosalie and Baroona, clear away to West End and St Lucia"

(*The Brisbane Courier*, 20 February 1893).

Only when the waters had subsided could the damage be fully evaluated:

"In Rosalie the general appearance is as though a mighty hand had played chess on the flats, with houses for pieces, and had in a moment of anger brushed them carelessly into a confused heap... All through these districts there is a very bad odour rising from the slimy mud which the receding water has left" (*The Queenslander*, 11 February 1893).



Rosalie

SCHOOL OF ARTS *and Commemoration Hall*

The armistice that ended World War I was signed in France at 11am on 11 November 1918. On the other side of the world, Australians were in mourning for those who had lost their lives serving their country. Almost 40% of Australian men aged 18-44 had enlisted in the war. By the end of the hostilities, Australia had the highest casualty rate of the Allied Forces at 68.5%, with a total of 60,000 troops killed and 152,000 wounded. Most of those killed were buried in overseas graves. Unable to lay their loved ones to rest at home, Australians expressed their grief by erecting war memorials in their local communities.

This substantial hall was built as a war memorial to commemorate those from the district who had served and died in World War I. The construction of the timber hall was funded by the local community and officially opened on Saturday 28 July 1928 by the then Lord Mayor, William Jolly.

As was common at the time, the hall was planned as a School of Arts where the community could utilise the reading library and meeting rooms. Traditionally, School of Arts buildings were established to provide adult education for the community and became very popular in the late 19th and early 20th Centuries in Australia.



Rosalie School of Arts, Brisbane, 1938, State Library of Queensland, Negative Number 33769

At the opening ceremony, the Lord Mayor stated that the School of Arts “would provide a means of bringing the residents together on a social basis, and when the library and reading room were furnished with books and periodicals it would aid in the development of the intellectual proclivities of the people” (*The Brisbane Courier*, 30 July 1928). Two shops with Nash Street frontages were included in the design of the building and the first tenancies in these shops were Mr Humber’s store and Miss Thomason’s dressmaking business.

Today the hall is an important historic landmark in Rosalie.

Bungalow and

BEVERLEY PICTURE

Theatres

From about 1914, Rosalie had its own outdoor picture theatre, the 'Bungalow Picture Palace'. It was situated near the corner of Nash Street and Baroona Road beside Alfred Bouthan's blacksmith store and shop. At the time of the theatre's opening, moving picture technology had become increasingly used in Australia and many other theatres were being established throughout the country. The flourishing film industry in both America and Australia assured the Rosalie audience a variety of silent films. By 1918 the name of the theatre had changed to 'Crown Picture Palace'. It continued to show films until 1921 when the theatre closed.

From 1942, on Tuesday, Friday and Saturday nights, the 'Beverley Theatre' was run from the Rosalie School of Arts. In the era before television, the 300-seat picture theatre provided entertainment for Rosalie residents. By 1957, perhaps due to decreased patronage caused by the introduction of television to Australia in 1956, the Beverley Theatre had closed.



*Example of an open air cinema, Cooks Pictures Open Air Cinema in Sherwood, ca 1925,
State Library of Queensland, Image No. 191858*

TRAM SHELTER

No. 6

This timber tram shelter was built in the 1930s after the tramline was extended along Elizabeth Street to Rainworth Primary School in 1930. Prior to this, a tramline to Rosalie had opened in 1904 running along Baroona Road into Nash Street where the line stopped. As with many Brisbane suburbs, the arrival of the tram service encouraged further residential development in the area.

The timber shelter was constructed during the Great Depression. Interestingly, many of the tram shelters that were built throughout Brisbane at this time were part of a Brisbane City Council works program intended to help alleviate unemployment. It was also hoped that by providing protection from the weather, the shelters would encourage greater tram patronage.

When the tramline down Elizabeth Street was officially opened in October 1930, the ceremony was attended by Lord Mayor William Jolly. Three special cars, the first filled with dignitaries, slowly travelled down Elizabeth Street along the new extension amid cheers from happy residents. A brass band followed behind the first car and added to the festival atmosphere. *The Brisbane Courier* reported that:



Rosalie-Adelaide Street Tram Number 48, ca 1900, Brisbane City Council, Image Number BCC-C54-3804K

"It was voted the biggest occasion in the district's history, next to the opening of the school, and the cheerful disposition of the crowd reflected those ardent workers who had been responsible for the latest step in Rainworth's progress" (*The Brisbane Courier*, 13 October 1930).

By the 1960s, compared with buses, Council viewed trams as an inefficient, expensive and inflexible form of public transport and subsequently decided to discontinue the service across Brisbane. On Sunday 13 April 1969, the last Brisbane tram passed along Queen Street on its final run to the workshops at Milton.

ROSALIE

omnibuses

Horse-drawn buses, known as omnibuses, are an important part of Brisbane's transport history. Evidence suggests that the first omnibus proprietor in Brisbane was John Chalk, who set up his business in the 1860s. John was the brother of Michael Chalk who established one of the two omnibus services in Rosalie in the 1880s.

The omnibuses pre-date the coming of the trains and trams to the city and provided a vital means of public transportation to the growing town. As the preferred method of transport used to travel to and from the city they were also flexible enough to navigate Brisbane's hills and valleys.

Generally, Brisbane's omnibuses were drawn by two to four horses. The timber carriages had interior seating, mostly for ladies, and two benches on the roof that faced out to the road making the carriage a 'double-decker'. The two omnibus businesses in Rosalie, Chalk's and Morton's, had large stables in Rosalie where the horses were rested and fed.

As Brisbane's train and tram networks were developed, they provided greater comfort and speed to Brisbane residents and the city's omnibus businesses were rendered unprofitable. In Rosalie the omnibuses ceased operations by 1912.



Omnibus travelling south past GPO, Brisbane, 1897, Queensland State Archives

THE LITTLE CITIZENS'

Free Kindergarten

When the Rosalie kindergarten was first opened in 1935 it was called 'The Little Citizens' Free Kindergarten'. The Creche and Kindergarten Association of Queensland built the attractive timber building with both Queensland Government and local community funds. This association was part of an early 20th Century social movement in Australia intent on improving the health of children through better nutrition, hygiene and education.

Free kindergartens were particularly important for poorer families as they ensured that very young children would be cared for, educated and given a nutritious lunch while their mother was at work. The Rosalie community's need for this service grew stronger during the hard years of the Great Depression. The opening hours of the Rosalie kindergarten were extended to assist local women who were forced to work longer hours to make ends meet.

When first opened 'The Little Citizens' Free Kindergarten' was described as the best of its kind in the Commonwealth:

"Everything has been designed from the viewpoint of the child. The windows are wide, and low enough for rows of little heads to look out...All the furniture is built for little children...As rest is quite as important as play, the kindergarten has stretchers and cots for the sleepy hours" (*The Sunday Mail*, 24 November 1935).



Girl at the Rosalie Kindergarten, ca. 1945, State Library of Queensland, Negative Number 74347

Children between the ages of 18 months to five years were welcome. To this day the building continues to operate as a kindergarten.

MARIST BROTHERS'

Monastery

This stately building was first built as a monastery for the Marist Brothers' Order and was opened by Archbishop James Duhig (1917-1965) in January 1929. The two-storey monastery building included seven upstairs bedrooms, a ground floor reception room, dining room, study, kitchen and chapel. It was designed by notable Brisbane architectural firm, GHM Addison and Son.

The Marist Brothers' Order was originally founded in France in the early 1800s and came to Sydney in 1872 where they set up several schools. By the 1920s, the Brothers had schools in New South Wales, Victoria and South Australia.

During the early 20th Century, the working class Catholic Parish at Rosalie had continued to expand as more immigrant families settled in the area. The Archbishop recognised the Catholic community's need for more educational facilities and on his invitation, the Marist Brothers came to Brisbane.

The Brothers were renowned for their focus on providing high-quality and affordable education and opened the first Marist Brothers' school in Queensland in January 1929 with 135 enrolments. At the opening ceremony, Archbishop Duhig stated:



Fernberg Road – Rosalie 1967, Brisbane City Council, Image Number BCC-B54-27482

"I make bold to predict that there is a great future before them in Queensland, and that they will contribute much to the advancement of education in this state" (*The Brisbane Courier*, 21 January 1929).

At the time most of the classes were held in the original Church of the Sacred Heart which had been previously relocated to the site in 1918. By the 1940s, classroom accommodation was deemed inadequate and a new college building was designed by Archbishop Duhig's nephew, Frank Cullen. In October 1949 the large, brick three-storey college building was officially opened by Archbishop Duhig.

The school was closed in 2008 amid protest from parents and past pupils. Today the school and monastery continue to serve the Catholic community as a centre for religious conventions and retreats.

Church of the

SACRED HEART



Church of the Sacred Heart,
ca 1926, Catholic Archives

This striking brick church was blessed and opened in June 1918 and was the third Catholic Church building in the Rosalie parish. The Catholic population in the Rosalie area had risen steadily in the late 19th Century and each Sunday local Catholics had to travel to the city or Red Hill to attend mass. It became clear to Archbishop Dunne (1887-1917) that Rosalie needed its own church.

The first church built in 1898 was a modest timber building that was also used as the parish school from 1906. In 1907 a second timber church was built beside the first. The original church was then used solely as the school. When the construction of the third church began, the first church was moved across the road to a vacant site where it continued to be used by the school. It became part of the Marist Brothers' school in 1929. The second church that had been built in 1907 became the infants' school.

Under the leadership of Archbishop Duhig (1917-1965) an unprecedented amount of property acquisition and building was undertaken by the Catholic Church across Brisbane. 'Duhig the builder', a term of endearment used by his contemporaries was renowned for purchasing prime sites (often on the crest of hills) on behalf of the Catholic Church for the construction of new churches,



Second Sacred Heart Church, 1914, State Library of
Queensland, Negative Number 7911

schools and hospitals. Throughout his career, Archbishop Duhig was responsible for building more than 400 major buildings in Brisbane.

On the night of 11 January 1942 a massive fire swept through the brick church. It quickly engulfed the church, destroying almost everything but the bricks and mortar. Luckily the priests were having their tea in the presbytery across the road when the fire broke out and nobody was injured in the blaze. The church was able to be rebuilt and continues to be an important landmark in the district.

OUR LADY HELP

of Christians' Convent

Considered to be one of Brisbane's most beautiful convents, the Our Lady Help of Christians' Convent was built for the Sisters of Mercy and opened by Archbishop Duhig (1917-1965) in 1919.

Five Sisters of Mercy led by Mother Superior, Mother Mary Vincent Whitty, first came to Brisbane from Dublin in 1861. As respected teachers they arrived on the invitation of Queensland's first Catholic bishop, Bishop Quinn (1859-1881). At the time, Bishop Quinn believed that the fledgling colony had become increasingly non-religious and was concerned for Catholic families and their children. His vision was to establish Catholic schools in Queensland for all Catholic children, particularly the poor. The Sisters began teaching Brisbane children at a small school that had been started in 1845 at St Stephen's in the city.

When the Catholic school at Rosalie first began in 1906, the Sisters of Mercy travelled each school day from All Hallows' to Rosalie by tram until the convent had been built. At the same time as the Marist Brothers' boys' school was opened in 1929, a girls' school, run by the Sisters was opened in a new building close to the convent on Given Terrace. In the tradition established by the first Sisters of Mercy in Brisbane, the sisters at the Rosalie school provided affordable high-quality Catholic education to generations of Rosalie's children. The Sacred Heart School was closed in 1995.



Mother Mary Vincent Whitty, late 19th Century, Courtesy Mercy Heritage Centre



Our Lady of Christians Convent 1919, Catholic Archives

'LUCERNE'

When this house was built around 1862 the area was defined by a series of large houses on their own estates, situated on the peaks of hills. 'Lucerne' was one of the first and was quickly followed by the construction of 'Fernberg' (now Government House), 'Barooka' and 'Bishopsbourne' in the late 1860s.

These grand residences overlooked the partially cleared land below, where a sprinkling of modest workers' cottages had appeared in the area. 'Lucerne' was originally built by James Young, who was employed as a foreman in John Petrie's business. Petrie was Brisbane's first mayor and foremost building contractor responsible for many of Brisbane's most important structures at this time. James Young had 16 children and as his family expanded, he built two more houses on the estate. From the early 1870s 'Lucerne' was rented by a succession of tenants.

From early 1878 'Lucerne' became a boarding and day school for young women (established by its principal, Miss Davis) where "Young ladies can join any one or more of the following classes: French, German, Latin, mathematics, drawing, and painting... singing" (*The Brisbane Courier*, 25 September 1878). However, by the beginning of 1879, the school had been moved to the Kangaroo Point residence 'Montpelier'.



Lucerne, a Milton residence, 1932, State Library of Queensland, Negative Number 176795

From 1883 to 1898 'Lucerne' was home to Queensland Parliamentarian, John Scott and has since then had several other owners. Today the beautifully maintained historic house offers bed and breakfast accommodation to visitors and is an alternative to staying in inner-city hotels.

Please note that 'Lucerne' is private property. Visits can be arranged by appointment only.

FERNBERG ROAD

planting boxes

As you walk along Fernberg Road you will notice a series of stone and concrete garden plots on the southern side of the road. It is likely these were built as part of a beautification program initiated by Brisbane City Council in preparation for the 1954 visit by Queen Elizabeth II. The City Council Works Committee approved £23,250 of road and footpath improvements in 1948. This included the construction of garden plots along Park, Baroona and Fernberg Roads – the route to Government House.

The royal visitors, Queen Elizabeth II and the Duke of Edinburgh, arrived at Eagle Farm Airport in Brisbane on 9 March 1954. They travelled along Kingsford Smith Drive, through Fortitude Valley, the city, down Coronation Drive, Park Road and up Fernberg Road to Government House. Along the way thousands of excited Brisbane residents welcomed the couple. Many of the buildings were elaborately decorated in celebration. The royal tour spent 10 days in Queensland and it was the first time a reigning English monarch had visited Australia.



Homes on Fernberg Road Rosalie, Brisbane, 1950, State Library of Queensland, Image Number 191858

Milton

CONGREGATIONAL

Church

On the opposite corner of Baroona and Haig Roads is the former site of the Milton Congregational Church that was opened in 1887 and demolished in the 1960s. Prior to this, a stone church had been built on Milton Road in 1864, which was the first church in the Rosalie area. The land on which the first church stood had been donated by Robert Cribb, early Brisbane land speculator and politician. His son, John, had played a large part in establishing the congregation in Milton. The close proximity of the railway and the newly built brewery beside the church detracted from the church's once tranquil atmosphere and the congregation moved to the new site on the corner of Baroona and Haig Roads.

From early on, Rosalie became home to a number of churches, established to meet the needs of a growing population. As well as the Congregational Church, the Rosalie Baptist Church was built on Ellena Street in 1884, the Roman Catholic Church of the Sacred Heart in 1898 on Given Terrace, an Anglican Church, St Martin's Church of England was built on the corner of Howard and Agars Streets in 1902 and the Rosalie Gospel Hall opened its doors on Bayswater Street in 1922.



Milton Congregational Church and Milton Primary School under flood, 1890, State Library of Queensland, Negative Number 91945

Due to its proximity to 'Red Jacket Swamp' the Congregational Church was periodically subject to flooding. This photograph was taken in the floods of 1890 from Fernberg Road. It is looking toward the church with Milton State School in the background and shows the significant impact this flood had on the area. Three years later in Brisbane's worst recorded flood event, the entire church was submerged with only the roof visible above water.

GREGORY PARK

Gregory Park was named after Sir Augustus Charles Gregory – explorer, surveyor-general, politician and Rosalie resident. In 1862, Gregory built his home ‘Rainworth’ on the slope of a high hill in the Rosalie district and lived there until his death in 1905.

Gregory is one of Australia’s most influential explorers. In 1855, he embarked on his most important expedition, the North Australia Expedition. The Imperial Government requested a scientific sea and land exploration of northern Australia and recommended Gregory as leader. In August that same year, Gregory, 18 men, 50 horses and 200 sheep left Moreton Bay by sea. They reached the Victoria River estuary (several hundred kilometres southwest of Darwin) in September and from there travelled overland southeast for 5000 miles (8047 kilometres). After 16 months the party made it back to Brisbane. The Royal Geographical Society awarded Gregory its gold medal for his courageous journey.

In 1858, he led another expedition to search for the lost explorer, Ludwig Leichhardt. Sadly, he did not locate Leichhardt. Nevertheless, his expedition successfully traversed southern outback Queensland through to Adelaide, South Australia.

In 1859, with Queensland’s separation from New South Wales, Gregory was instrumental in establishing the new colony’s southern border. In the same year he was appointed Queensland’s first



Rainworth, residence of Sir Augustus Charles Gregory, Bardon, ca 1885, State Library of Queensland, Negative Number 63037



Honourable Sir Augustus Charles Gregory, State Library of Queensland, Negative Number 167303

surveyor-general, a position he held for almost 16 years. He also served as the colony’s commissioner of crown land. In 1882 he was appointed to Queensland’s Legislative Council and in 1902 he was elected the first mayor of Toowong Shire Council.

In recognition of his contribution to the Empire, he was appointed Companion of the Order of St Michael and St George (CMG) in 1874 and Knight Commander of the Order of St Michael and St George (KCMG) in 1903. On his passing in 1905 his obituary read:

“...knowing the heroic life he had lived; his simple humility of character was very touching and endeared him warmly to all who know him well” (*Queensland Figaro*, 29 June 1905).

RED JACKET

Swamp

Before this park was named 'Gregory Park' in 1910, the reserve was known as 'Red Jacket Swamp', a name possibly derived from a type of bird found in the wetland. The swamp increasingly became a concern for the Rosalie community, especially when the school opened beside it in 1889. As nearby residential development increased, so too did the contamination of the swamp, as runoff from the surrounding houses flowed directly into the reserve. Cows grazing around the swamp also contributed to the issue.

By 1896, the situation had become very serious when outbreaks of diseases such as typhoid and diphtheria appeared in the Rosalie area. At the time, the outbreaks were blamed on the unpleasant odours rising from the swamp. A deputation to the colonial secretary by the Toowong Shire Council requested financial assistance for the draining of the swamp:

"Residents in the vicinity were loud in their complaints, and the medical men said it was a regular breeding place for the germs of disease. A great deal of typhoid fever had existed in that neighbourhood lately and it was thought that it had taken its rise from this swamp" (*The Brisbane Courier*, 24 July 1896).



Aerial photograph of Gregory Park, 1946, Brisbane City Council

The request for assistance was granted and funds were made available to the Toowong Shire Council to assist in this work.

It seems, however, that little progress was made as the swamp was situated within the boundaries of both the Toowong and Ithaca Shire Councils. Tensions between the two local governments erupted over who would contribute financially to the work. In 1901 a public meeting was held in the fire station to address the issue. About 70 people attended and a motion was carried, that "it is urgently necessary that the danger be removed without further delay" (*The Brisbane Courier*, 3 July 1901).

The swamp was eventually drained and filled. By 1910 this public space was referred to as Gregory Park Reserve.

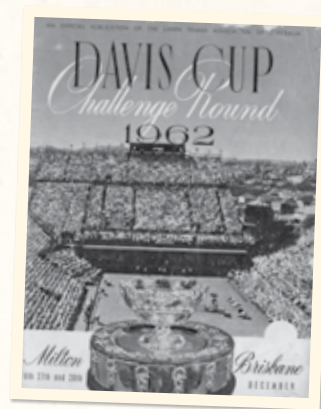
Milton

TENNIS CENTRE

Frew Park is situated on the former site of the Milton Tennis Centre. From 1950 until the 1990s the Milton Tennis Centre was regarded as one of Australia's most prominent tennis venues. The Queensland Lawn Tennis Association (QLTA) was formed in 1888, but it wasn't until 1915 that they found a permanent home with the acquisition of the land at Milton. The swampy ground was quickly filled and by 1919 a series of lawn courts had been built.

The QLTA's president at the time was Robert Frew. On his passing in 1930 he was affectionately named the 'father of Queensland tennis'. Prior to his death, he had been elected president of the association for 15 years successively. In 1932 a set of timber gates were built at the entrance to the tennis centre in his memory. Today his name is remembered in the park's name, Frew Park.

In 1952 the tennis centre hosted Brisbane's first Davis Cup match between India and Italy. This event marked the beginning of a succession of major international tournaments held at the Milton Tennis Centre. By the 1990s, the centre had hosted more Davis Cup matches than any other city in Australia. The Milton Tennis Centre was not used exclusively for tennis matches. With the capacity to hold 7000 people, it was the ideal location to host big name entertainment such as The Rolling Stones, Johnny Cash and Elton John.



Davis Cup Challenge Round 1962: at Frew Park, Milton, December 26, 27, 28 – Program Cover, Brisbane City Council, Image Number BCC-B120-31088

By the 1990s, the centre boasted 19 hard courts and four grass courts. Unfortunately, in 1994 the timber stands were declared unsafe and the centre was subsequently closed.

Milton bowling alley

In 1962 a bowling alley was built beside the tennis centre with a Haig Street frontage. Known as 'Milton Bowl', it was built at a time when tenpin bowling was all the rage. Influenced by the popularity of bowling in America and England, Australia's first bowling alley with automated pin-setting machinery was opened in Sydney in 1960. Brisbane soon followed suit with a number of bowling alleys constructed throughout the suburbs including Milton.

Bowling at Milton Bowl remained a popular pastime for people in the district for the next 40 years, especially for young people. Within the complex was 'The Alley' bar that became a popular live alternative music venue until the bowling alley was closed in 2008. The entire building was demolished soon afterwards.

MILTON

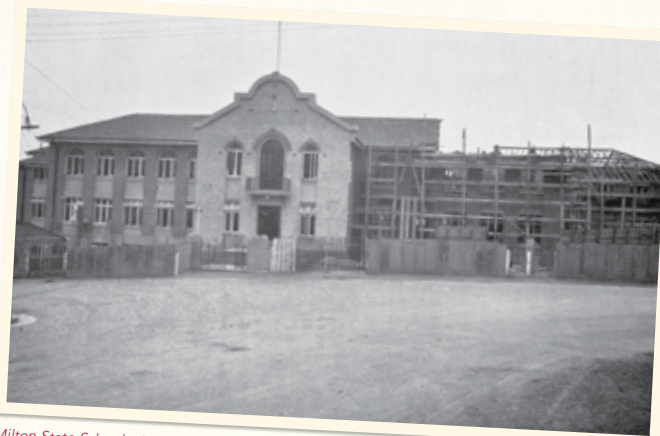
State School

Established in 1889, Milton State School was built in the low-lying area known as 'Red Jacket Swamp'. As the number of school-age children in Rosalie reached 89, the need for local educational facilities had become a focus for the community.

The preferred site for the establishment of the school was on high ground on the corner of Howard and Baroona Roads. However, the land's cost was more than the Department of Public Instruction was prepared to pay. The site at 'Red Jacket Swamp' was chosen at zero cost to the government and in 1888 construction of a small timber school began.

When opened in March 1889, the first school building had one classroom and a headmaster's office. Almost immediately this building proved to be too small and by September that year another classroom was added. It was at the same time that the name of the school was changed from Rosalie to Milton.

As the Great Depression took hold of the economy from 1929, many local people found themselves out of work. In an attempt to create employment and stimulate the economy, the Queensland Government undertook a program of infrastructure construction and relief schemes. Under these programs, many of Brisbane's



Milton State School – Under Construction, 1936, Brisbane City Council, Image Number BCC-B120-81040

finest brick state school buildings were built, including the 1938 Milton State School building. This building replaced the earlier timber school.

The new two-storey brick building was designed with 20 classrooms, a concrete basement and an industrial wing consisting of four rooms for domestic science and two workshops for woodwork and tin-smithing.

The opening of the new building was attended by the then Minister for Public Instruction, Mr FA Cooper, who stated that the "new Milton State School would stand for the next century or more, and would add to the wealth and comfort of the district, State and Commonwealth" (*The Sunday Mail*, 9 May 1937).

Milton Volunteer

FIRE BRIGADE

and Albert Hall

Milton Volunteer Fire Brigade Station

In the 1880s most of the building stock in Brisbane was constructed from timber and Rosalie was no exception. As more and more houses were built in the area, the danger of fire was recognised by the Rosalie community and the need for a local fire brigade became evident. In 1889, the Milton Volunteer Fire Brigade was formed. As the name denotes, the fire brigade consisted wholly of volunteers and its equipment was purchased with community donations.

Initially, the fire station "consisted merely of a rough wooden shed... situated on the Rosalie road, close to the junction with Baroona Road" (*The Brisbane Courier*, 6 July 1892) and was regularly flooded by stormwater. This inadequate accommodation was replaced in 1892 with a new station situated on the corner of Baroona Road and Bayswater Street, beside 'Red Jacket Swamp'. At the time of its completion it was reported that "The new station, together with a 40ft. bell-tower, which is now nearly complete, is of very commodious dimensions, and will, without doubt, meet the requirements of the district for many years to come" (*The Brisbane Courier*, 6 July 1892).

In 1918, the Milton Volunteer Fire Brigade was amalgamated into the Ithaca Fire Brigade and relocated to a new station building in Paddington. The tower was relocated there and the Milton station building eventually demolished.



Milton Volunteer Fire Brigade in front of the Milton Fire Station, State Library of Queensland, Negative Number 183374

Albert Hall

Across Baroona Road, approximately where the cinema is situated today, was the location of Rosalie's Albert Hall. The hall was likely to have been built around 1904 and quickly became the centre for social activities in the small district. Meetings, lectures, concerts, wedding receptions and dances were held in the modest timber hall. During World War I, receptions welcoming home the district's returned soldiers were held there.

Once the Rosalie School of Arts and Commemoration Hall had been completed in 1928, most of the social activities in the area were held in the new premises. Over the years, Albert Hall was used for many purposes including a billiard hall, a barber's shop, a fish and chip shop and a restaurant. In the 1990s it was demolished to make way for the Blue Room Cinebar that continues the tradition of providing entertainment to the community.

WORKERS' COTTAGES

This street was originally called George Street. The row of modest timber cottages were all built in the late 19th and early 20th Centuries. They reflect the emergence of Rosalie as mainly a working-class area with many families living in timber cottages.

In 1885 the Queensland Government introduced the *Undue Subdivision of Land Prevention Act 1885* in response to concerns regarding over-population in inner-city areas from as early as the 1870s. The construction of small dwellings and tiny cottages on very small parcels of land was thought to have increased the risk of disease and fire throughout the inner-city suburbs. With the passing of the 1885 legislation it became illegal to subdivide land into lots of less than 16 perches (405m²).

In Rosalie, most of the large estates were subdivided under this Act. The subsequent sale of the land followed a pattern common in Brisbane in the mid-to-late 19th Century – the wealthier residents bought land on the rises and tops of hills which ensured breezes, views and protection from flooding and waste runoff. The less wealthy purchased more affordable land at the base of the hills.



View across Milton Heights from Rosalie, ca. 1914, State Library of Queensland, Image No. 64045

In 1894 the *Post Office Directories* record seven people living in George Street and by 1905 this had risen to 10, including a cab proprietor, a painter, a railway employee and a bricklayer – reflecting the working-class character of the street. There was a Gospel Hall at the bottom of the hill on the corner of Baroona Road, and St Martin's Anglican Church was on the other side of the street on the corner of Howard Street.

'GLENTWORTH'

'Glentworth' was described in 1881 as "That Charming Villa Residence" (*The Brisbane Courier*, 11 May 1881) and this is still true today. The house was built between 1879-1881 for the fourth son of the second earl of Limerick, the Honourable Cecil SS Pery. He and his family lived in the house until 1888.

From the late 1880s the Chalk family called 'Glentworth' home and they lived there until the 1960s. Family patriarch, Michael Chalk, played an important role in the progress of Rosalie in the late 19th Century. As proprietor of a horse-drawn omnibus business, Chalk provided a vital public transport service for Rosalie residents prior to a tramline being extended down Baroona Road in 1904. Chalk's omnibus service was one of two in Rosalie; the other was run by Mrs Leah Morton.

Both services had their stables in Rosalie. Chalk's was situated on Ellena Street, close to the corner of Nash Street, and Morton's was on Beck Street. The omnibuses travelled from the terminus on the corner of Nash and Beck Streets, down Baroona Road to Coronation Drive (then known as River Road) and into the city.

Please note that 'Glentworth' is a private property and is not open to the public.



Brisbane Bus Company horse-drawn passenger vehicle travelling to Woolloongabba, Stanley Bridge and Coorparoo, 1904, State Library of Queensland, Image Number 6185.

'BOONDAH'

This majestic timber house was built in 1907 for Edwin Fenton Robinson, a draftsman with the Government Survey Office for 44 years. The unusual design of the house is thought to have been created by important Brisbane architect, Richard Gailey, who designed some of Brisbane's most beautiful hotels in this era including the Regatta Hotel on Coronation Drive in Toowong. When first built, the grounds of 'Boondah' were far larger than they are today.

During World War I, the 'Milton and Rosalie Garden Fete' was held in the grounds to raise money for the Wounded Soldiers' Fund. This was established to provide financial assistance to care and repatriate Australia's returned soldiers. The fete was opened by the governor's wife, Lady Goold Adams on 20 September 1915. Stalls were attended by residents from the district where cakes, sweets, flowers, jumble and art were sold. Entertainment on the day included a performance from the federal band and by the All Saints' Gymnastic Club. Up to 600 people attended the afternoon and the fete was declared to be "very successful" (*The Brisbane Courier*, 20 September 1915).

The Fenton Robinson family owned 'Boondah' until the late 1960s.

Please note that 'Boondah' is a private property and is not open to the public.



Rosalie and Milton Patriotic Fete during World War I, 1915, State Library of Queensland, Image No.22994



Gymnasts performing at the Rosalie and Milton Patriotic Fete, Brisbane, 1915, State Library of Queensland, Image No. 7729-0001-0028

'BAROONA'

'Baroona' is one of Rosalie's oldest houses and was built in 1866. It was designed by Benjamin Backhouse who was also responsible for designing several of the other grand houses in the Rosalie area, 'Bishopsbourne' and 'Fernberg'. When first built, the brick house was situated on a large estate, much of which was uncleared bushland. In the 1880s, the land was subdivided into smaller portions and sold for residential development.

Over the years 'Baroona' has been home to several important Queensland politicians. The first owner of the house was William Draper Box, member of Queensland's Legislative Council for 30 years. In the 1880s it was home to Hon. John Donaldson, Member of the Legislative Assembly (MLA), and following this became home to Sir Robert Philp who served as premier from 1899–1901 and 1907–1908.

Please note that 'Baroona' is a private property and is not open to the public.



Baroona, a residence in Paddington, Brisbane, 1886, State Library of Queensland, Image No.62754

'FERNBERG'

– *Government House*

When 'Fernberg' was built in 1865 it looked quite different to the grand residence of today. It was originally home to Johann (John) Christian Heussler, Member of the Legislative Council (MLC) an early Queensland politician, diplomat and businessman. The name, 'Fernberg', is a German phrase meaning 'distant mountain'. Constructed primarily of brick and stone and positioned on a prominent hill, the house was considered one of the finest in the area when it was built.

In the 1880s a new owner, John Stevenson, who was a member of the legislative assembly and successful pastoralist, commissioned one of Brisbane's most important architects, Richard Gailey, to design major renovations for the house. Gailey is most famous for his Brisbane hotels, including the Regatta Hotel in Toowong. The changes to 'Fernberg' almost doubled the size of the house and transformed the colonial residence into an Italianate manor.

In 1910 'Fernberg' was leased to the Queensland Government to be used as a temporary Government House following the establishment of a Queensland university in the original Government House in the city. The intention was to have a new Government House constructed in Victoria Park, but this was never completed. Instead, in 1911 the government purchased 'Fernberg' which then became Queensland's permanent vice-regal residence. 'Fernberg' remains the Queensland Governor's residence.



Perspective drawing of Villa Fernberg, Brisbane, ca 1864, State Library of Queensland, Image No.193620

'BISHOPSBOURNE'

This majestic house was built between 1865-1868 as the residence of the first Anglican bishop, Edward Tufnell. It is built on land donated by Emmeline Leslie to the Anglican Church in 1862.

Prior to the house being constructed, the bishop had managed to raise £4400 in England for the Brisbane congregation. Controversially, he used £3000, to build 'Bishopsbourne'. Many in the Anglican congregation at the time saw this as extravagant and it contributed to Tufnell's unpopularity within the colony. He returned to England in 1874.

The masonry entrance gates on Milton Road were built in the 1870s and the two-storey brick and stone kitchen and service wing were added to the house in 1886.

The beautiful stone chapel that replaced an earlier 1870s timber one was built in 1912. It was designed by one of Queensland's most important architects, Robert Smith (Robin) Dods. The chapel was designed to complement the large house.

St. Francis' Theological College was moved from Nundah to the grounds of 'Bishopsbourne' in 1936 and a series of timber buildings were constructed to accommodate the students. In 1964 Archbishop Strong moved the Bishop's residence to 'Eldernell' in Hamilton. Today, 'Bishopsbourne' remains part of St Francis' Theological College.



Bishopsbourne in Milton, ca 1870s, State Library of Queensland, Image No. 7684-0001-0001

Please note that 'Bishopsbourne' is a private property and is not open to the public.

**Brisbane City Council
Information**

GPO Box 1434
Brisbane Qld 4001

Printed on recycled paper



N2013-03223
© Brisbane City Council 2013

For more information
visit www.brisbane.qld.gov.au
or call (07) 3403 8888



Facebook.com/BrisbaneCityCouncil



@brisbanecityqld