

October 2024

## Swan Terrace, Windsor

### Local Area Traffic Management

#### Project update

We are pleased to advise planning for our Local Area Traffic Management (LATM) project on Swan Terrace in Windsor is progressing.

In 2020, we consulted with the community about a range of treatments on Swan Terrace and surrounding streets.

The community supported various traffic management treatments along Swan Terrace, which Council is now progressing to detailed design and construction.

We have reviewed recent traffic data and are proposing to install new painted threshold treatments on the northern and southern end of Swan Terrace, as well as a new pedestrian crossing island on Swan Terrace at the Newmarket Road intersection.

These traffic management treatments will help encourage slower vehicle movements and provide important safety improvements at either end of Swan Terrace.

#### What does this project involve?

Works as part of this project will include:

- painting a threshold treatment on Swan Terrace at Northey Street
- installing a splitter island and painting a threshold treatment Swan Terrace at Newmarket Road
- painting associated line marking, including yellow 'No Stopping' lines.

**Please see the project plan on the back page for more information.**

#### Why are we doing this?

This project is part of our LATM program which delivers improvements across Brisbane's local road precincts and suburbs to ensure safer and slower roads.

The improvements for Swan Terrace will:

- provide safer and more accessible pedestrian crossing points
- reduce corner cutting and encourage slower vehicle speeds
- increase sightlines and visibility.

#### Next steps


If you have any questions or would like to provide feedback, please contact the project team on our contact details below.

Council appreciates all feedback and concerns and records all feedback for future planning in the area to be assessed against city-wide priorities.

We are committed to keeping the community informed and will provide more information before construction starts.

#### Contact us

To find out more about this project, you can contact us by:

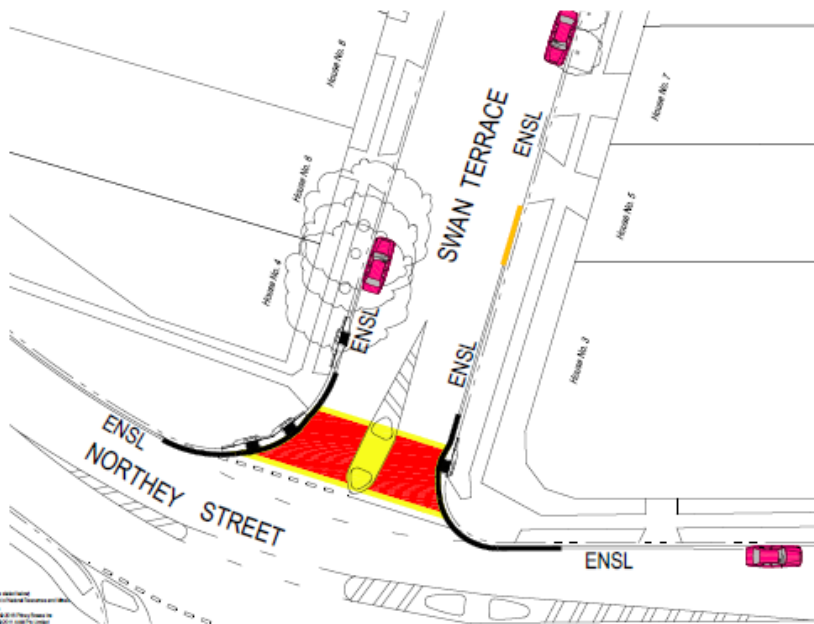
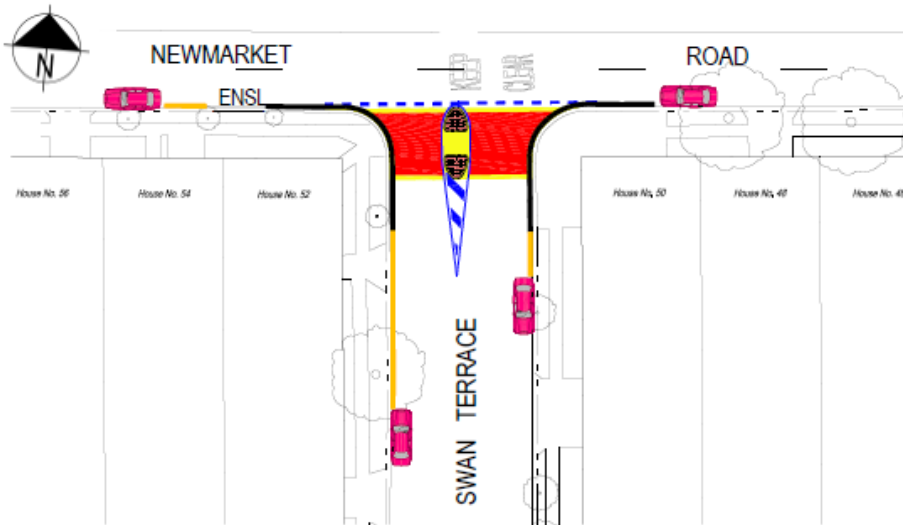
 **3178 5413** (business hours)  
**3403 8888** (24 hours)

 **cityprojects@brisbane.qld.gov.au**

 Visit [brisbane.qld.gov.au](http://brisbane.qld.gov.au) and search 'Road safety programs'

# LOCAL AREA TRAFFIC MANAGEMENT

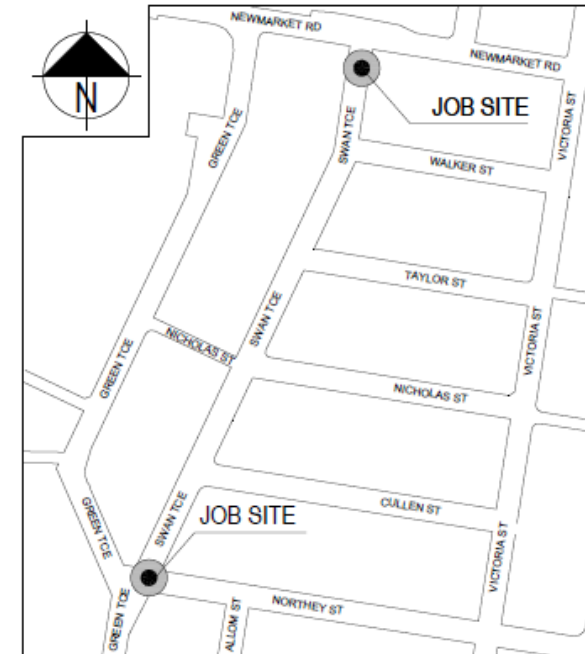
## SWAN TERRACE - WINDSOR



### LEGEND:

-  EXISTING TREES
-  NEW COLOURED PAVEMENT TREATMENT - NO PATTERN
-  150mm HIGH STENCILLED CONCRETE ISLAND
-  PAINTED LINES (DRIVE OVER TO ACCESS PROPERTIES)
-  INDICATES PARKING
-  PROPOSED YELLOW NO STOPPING - (BASED ON SIGHT DISTANCE REQUIREMENTS)
-  EXISTING YELLOW NO STOPPING LINE
-  YELLOW NO STOPPING AT INTERSECTIONS - 10m MINIMUM CLEARANCE RULE

NOTE: QLD ROAD RULES SEC.170 (4) REQUIRES NO STOPPING WITHIN 10m OF INTERSECTION.



LOCATION

DATE: 20/05/2024  
 DRAWN BY: [Name]  
 CHECKED BY: [Name]  
 APPROVED BY: [Name]  
 PROJECT: [Name]  
 SHEET: [Name]  
 OF: [Name]

SECURITY LABEL: FOR PUBLIC USE ONLY



Dedicated to a better Brisbane