

Lindum rail crossing upgrade



Project Design | February 2024

Dedicated to a better Brisbane



Artist impression

Queensland Rail's Lindum station accessibility upgrade

We are pleased to share the preliminary design for the Lindum rail crossing upgrade at Wynnum West.

Project overview

The upgrade will include realigning the railway crossing to the west and reconfiguring the layout to achieve a perpendicular crossing. New traffic signals will control all movements through the junction.

New signalised pedestrian crossing facilities with shared paths and footpaths will improve active transport connectivity. These changes will increase visibility, and make it safer and easier for people walking, riding and driving through the junction.



Improve safety for all road users



Improve intersection operation



Improve connectivity for people walking and riding

View the project features

Scan the QR code to find out more about the project design and register for updates.



Have yoursay

Brisbane City Council will hold two community information sessions to share the updated design with the community. Come along to provide your feedback.

Information sessions

Thursday 22 Feb 2024, 5pm - 7pm	Wynnum Plaza (near Coles)
Saturday 24 Feb 2024, 9.30am - 11.30am	

Funding

The project is currently funded by the Australian Government, the Queensland Government and Brisbane City Council, with construction subject to funding.



Australian Government



Queensland Government



Dedicated to a better Brisbane

Contact the project team

You can also provide feedback by contacting the project team via the contact details below.

1800 669 416 (business hours)
3403 8888 (after hours)

cityprojects@brisbane.qld.gov.au

Lindum rail crossing upgrade
City Projects Office
Brisbane City Council
GPO Box 1434
Brisbane Qld 4001

@ Visit Council's website at brisbane.qld.gov.au and search 'Lindum rail crossing upgrade'

Next steps

Council is now working on the detailed design and will share more information with the community, including outcomes from community consultation mid-2024.

Brisbane City Council
GPO Box 1434
Brisbane Qld 4001



Printed on sustainable paper



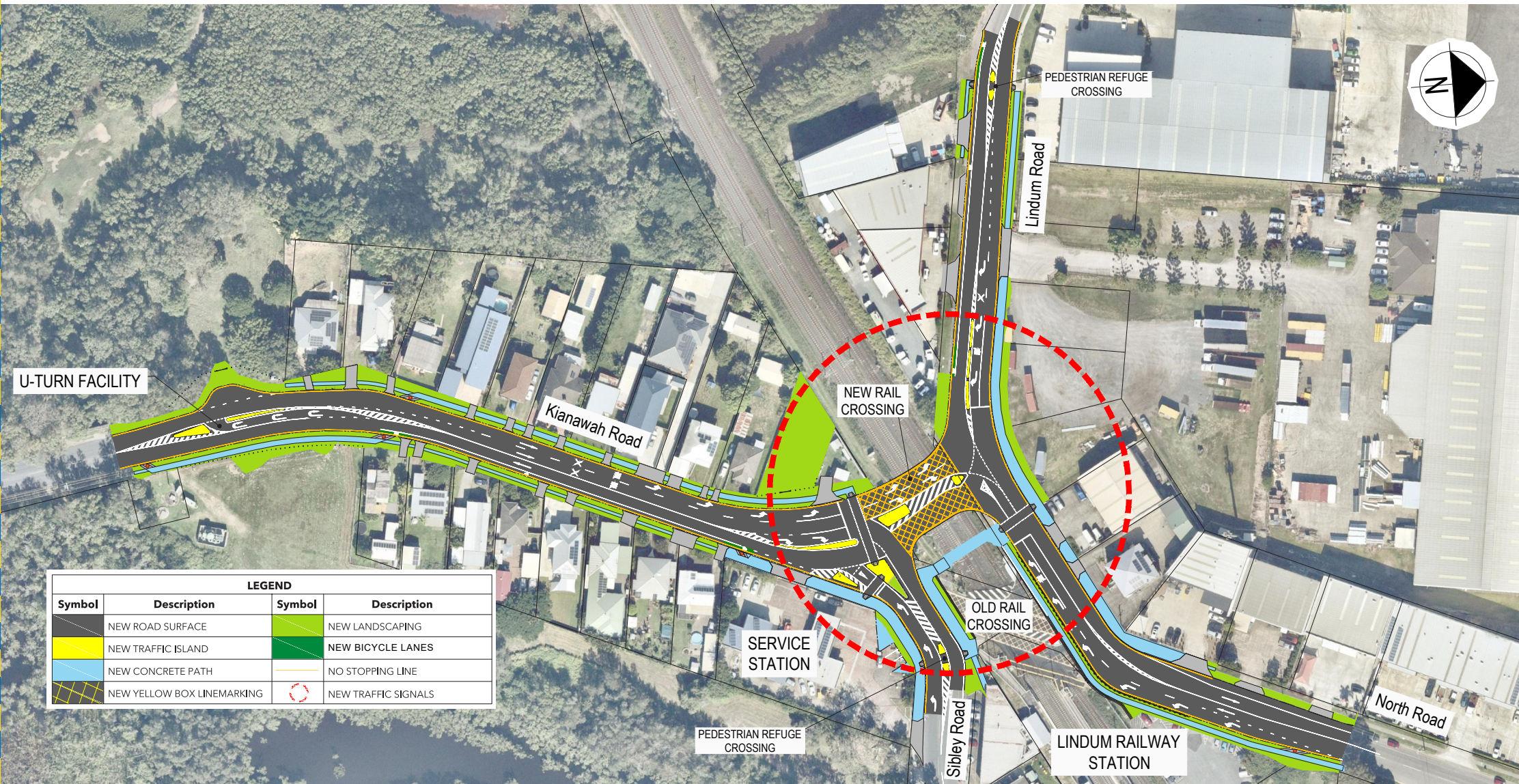
CA22-1284078-02-6631
© 2023 Brisbane City Council

brisbane.qld.gov.au
3403 8888

[/BrisbaneCityCouncil](https://www.facebook.com/BrisbaneCityCouncil)
[@brisbanecityqld](https://twitter.com/brisbanecityqld)
[@brisbanecitycouncil](https://www.instagram.com/brisbanecitycouncil)

Every effort is made to ensure that information is correct at time of printing

Lindum rail crossing upgrade - preliminary design



LEGEND			
Symbol	Description	Symbol	Description
	NEW ROAD SURFACE		NEW LANDSCAPING
	NEW TRAFFIC ISLAND		NEW BICYCLE LANES
	NEW CONCRETE PATH		NO STOPPING LINE
	NEW YELLOW BOX LINEMARKING		NEW TRAFFIC SIGNALS

FOR MORE INFORMATION



Call 1800 669 416 (business hours) 3403 8888 (after hours)



Email cityprojects@brisbane.qld.gov.au



Write to City Projects Office, Brisbane City Council,
GPO Box 1434, Brisbane Qld 4001



Visit brisbane.qld.gov.au and search
'Lindum rail crossing upgrade'