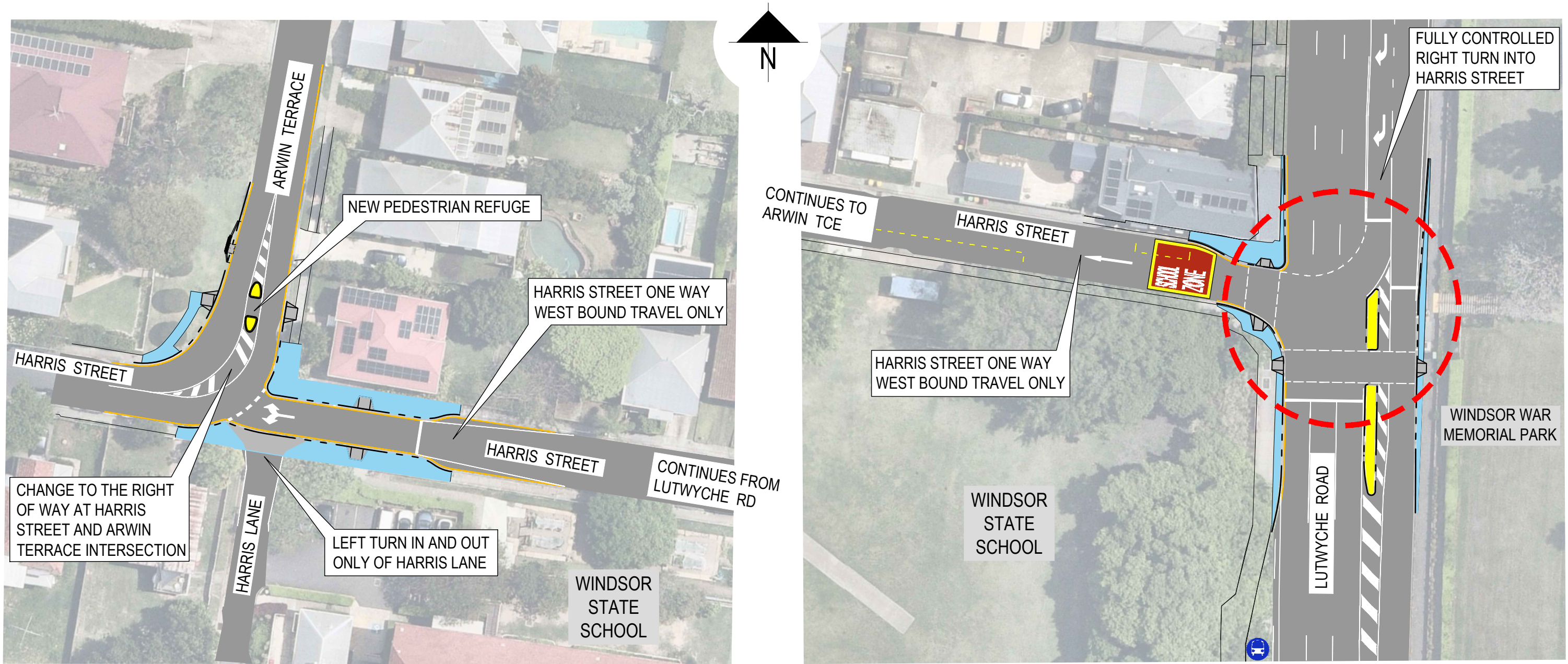


Lutwyche Road and Harris Street intersection upgrade

Windsor



Legend			
Symbol	Description	Symbol	Description
	ROAD SURFACE		KERB RAMP
	NEW TRAFFIC ISLAND		NO STOPPING LINE
	NEW FOOTPATH		NEW TRAFFIC LIGHTS
			EXISTING BUS STOP

SECURITY LABEL: FOR PUBLIC USE ONLY

CONSULTATION
 CONCEPT DESIGN
 LAYOUT DETAIL SUBJECT TO CHANGE



Dedicated to a better Brisbane

DESIGN A

July 2024
 CONSULTATION PLAN

For more information about this project, please call the project team on 3178 5413 or email cityprojects@brisbane.qld.gov.au.

DATA INFORMATION
 Brisbane City Council (unless stated below)
 Copyright © 2013 Department of Natural Resources and Mines
 Copyright © 2012 AAMRsearch
 StreetPro digital spatial data © 2014 Fliray Street Inc.
 2008 Neemap © 2008 Neemap Pty Limited
 2012 - 2016 Aerial Imagery © 2011 AAMR Pty Limited
 2009 Aerial Imagery © 2009 AAMRsearch Pty Limited
 2007 Aerial Imagery © 2007 Fugro Spatial Solutions
 2005 Aerial Imagery © 2005 GISCOC
 2014 Brisbane street map © 2009 Metway Publishing

DATA DISCLAIMER
 In consideration of Council, and the copyright owners listed above, permitting the use of this data, you acknowledge and agree that Council, and the copyright owners, give no warranty in relation to the data (including accuracy, reliability, completeness, currency or suitability) and accept no liability (including without limitation, liability in negligence) for any loss, damage or costs (including consequential damage), resulting in any use of this data.