

# Lindum rail crossing upgrade

October 2024



*Dedicated to a better Brisbane*



Brisbane City Council is progressing the design for the Lindum rail crossing upgrade at Wynnum West, following community feedback and further technical investigations.

As part of ongoing technical investigations, we are working closely with service providers to resolve complex public utility relocations. This will not only support this intersection upgrade but will also improve the underground services for the local network.

Council and the Queensland Government have recently agreed to a land swap, which will create space to make necessary safety improvements at this intersection. We are currently formalising this agreement.

We want to thank everyone who provided feedback on the preliminary design released in February 2024, either by attending the community information sessions or contacting the project team.

A summary of the feedback we received and how this is being considered can be found on page 2.

## A message from the Lord Mayor

We're progressing the Lindum rail crossing upgrade to help you get home sooner and safer.

Initial safety improvements, including the 12-metre boom gate and enhanced line-marking have been delivered and we are now progressing the next phase of this project.

By working together with other levels of government, we can improve safety for everyone travelling in this area.

We remain committed to delivering this jointly-funded upgrade to help keep Brisbane moving.

**Adrian Schrinner,  
LORD MAYOR**



## Funding

The Lindum rail crossing upgrade is jointly funded by the Australian Government, the Queensland Government and Brisbane City Council, with construction subject to funding confirmation. More information about timeframes will be shared when funding is confirmed.



Australian Government

**BUILDING AUSTRALIA**



Queensland Government

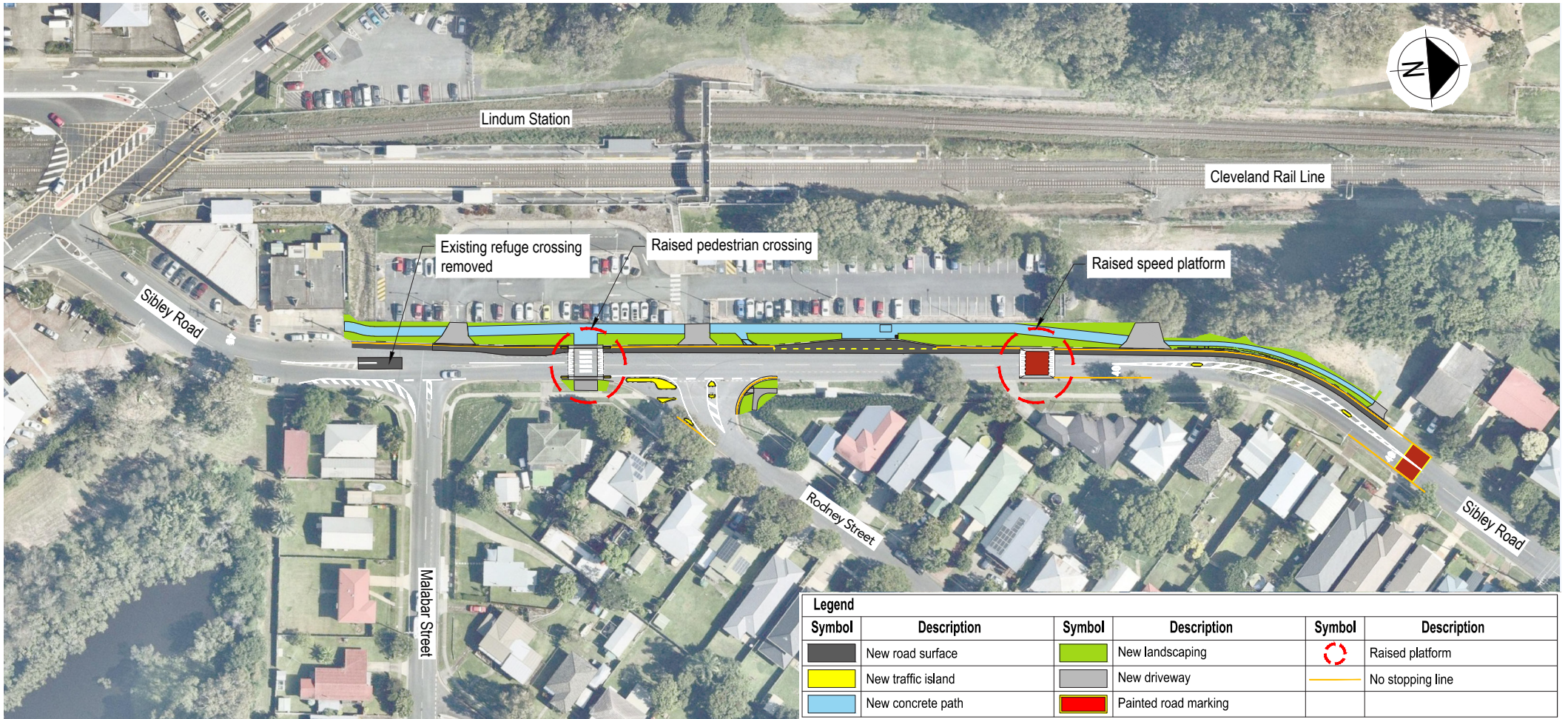


*Dedicated to a better Brisbane*

Below is a summary of the community feedback received on the preliminary design released earlier this year. To view the preliminary design and learn more about the project, please visit [brisbane.qld.gov.au](http://brisbane.qld.gov.au) and search 'Lindum rail crossing upgrade'.

Key community feedback	Council's consideration and response
<p>U turn facility on Kianawah Road</p>	<p>The U-turn facility has been chosen as the most appropriate design to meet the anticipated traffic demand now and into the future. In response to community feedback, we will install a 'Keep Clear' road marking on the northbound lane on Kianawah Road and widen the road to accommodate a standard vehicle with a trailer.</p>
<p>Sibley Road no right turn</p>	<p>Removing the right turn out of Sibley Road will reduce the number of movements at the intersection allowing for more green light time in the signal phasing to flush traffic on Kianawah Road and Lindum Road. This change will provide immediate safety improvements at the level crossing and improve how traffic will flow through the intersection and along Kianawah Road.</p>
<p>Speed limits</p>	<p>Community feedback highlighted that high traffic volumes and current road configuration at the level crossing can compromise safety. Improving safety at this intersection is a priority for this upgrade; in addition to realigning and signalling the intersection, we are investigating reducing the speed limit to 40km/hr on all approaches to the crossing.</p>
<p>Connectivity on Sibley Road</p>	<p>We heard that access to public transport is a priority, as the Lindum Station is a key connection to local facilities. We are enhancing connectivity to the station and improving safety along Sibley Road, by incorporating additional features into the design. These include installing a raised pedestrian crossing to connect to the station, painted road markings, and building out the kerb on local connecting streets to slow traffic through the area.</p>
<p>Increased congestion on Kianawah Road</p>	<p>Local road users expressed Kianawah Road carries a high number of vehicles per day and experiences long queues, particularly in the morning peak period. We are prioritising traffic on Kianawah Road by extending the green time in the traffic light signal phasing, which will improve traffic flow. Capacity will also be increased along Kianawah Road by extending the left-turn pocket to reduce queue lengths and enable the U-turn facility to operate as designed. To facilitate these changes, no stopping lines are required on either side of Kianawah Road at the approach to the level crossing.</p>
<p>Ultimate design</p>	<p>The Queensland Government in partnership with the Australian Government and Council, investigated solutions including separating road from rail with a road overpass. Delivery of a grade-separated overpass in this location remains a longer-term consideration. For more information, please contact the Department of Transport and Main Roads via <a href="mailto:SEQLevelCrossingPlanning@tmr.qld.gov.au">SEQLevelCrossingPlanning@tmr.qld.gov.au</a></p>
<p>Active transport</p>	<p>We were asked about connectivity for people walking and riding through the Lindum precinct. We have incorporated active transport features into the design where possible. Controlled crossing facilities will be installed on Kianawah Road and Lindum Road as well as over the level crossing, to the west of the train station, to maintain access to local businesses. On-road cycle lanes will be provided northbound on Lindum Road and southbound on Kianawah Road.</p> <p>We are currently investigating additional active transport facilities along Sibley Road. See the proposed changes to Sibley Road below.</p>

# Proposed Sibley Road improvements



The proposed project features on Sibley Road include:

- widening the footpath on the northern side of Sibley Road and installing ramps for better connection to the Lindum Station and throughout the precinct
- installing a raised pedestrian crossing on Sibley Road to connect to new footpaths
- narrowing access to Malabar Street and Rodney Street off Sibley Road to reduce the speed of motorists
- installing no stopping lines on sections of Sibley Road to enhance visibility at new crossing points.

## Overall project benefits

Realigning the intersection and installing traffic signals will improve safety for all road users and enhance traffic flow through the level crossing. New signalised crossing facilities and upgraded footpaths will improve connectivity for active transport users.



Improve safety for all road users



Improve connectivity for people walking and riding



Improve intersection operation

## Next steps

Council is currently awaiting a funding agreement from the Australian Government to construct this upgrade.

We will keep you updated as planning for the next phase of works continues to progress, in consultation with the Queensland and Australian governments.

### Register for updates

We encourage anyone who lives, works or travels in the area to subscribe to receive project updates.

Scan the QR code to find out more about the project and sign up to receive project updates.



**SCAN ME**  
for updates

## For more information

- 📞 call 3178 5413 (8:30am – 4:30pm) or 3403 8888 (after hours)
- @ email [cityprojects@brisbane.qld.gov.au](mailto:cityprojects@brisbane.qld.gov.au)
- 🖥️ visit [brisbane.qld.gov.au](http://brisbane.qld.gov.au) and search 'Lindum rail crossing upgrade'
- ✉️ write to City Projects Office, Brisbane City Council, GPO Box 1434, Brisbane QLD 4001.

**Brisbane City Council**  
GPO Box 1434  
Brisbane Qld 4001

Every effort is made to ensure that information is correct at time of printing

Printed on sustainable paper



IMAP-171263317-02-6946  
©2024 Brisbane City Council

[brisbane.qld.gov.au](http://brisbane.qld.gov.au)  
 3403 8888

/BrisbaneCityCouncil  
 @brisbanecityqld  
 @brisbanecitycouncil